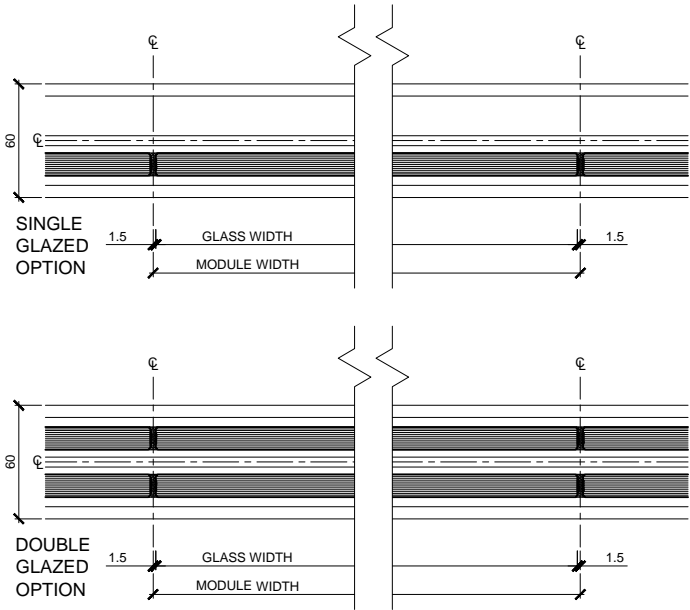
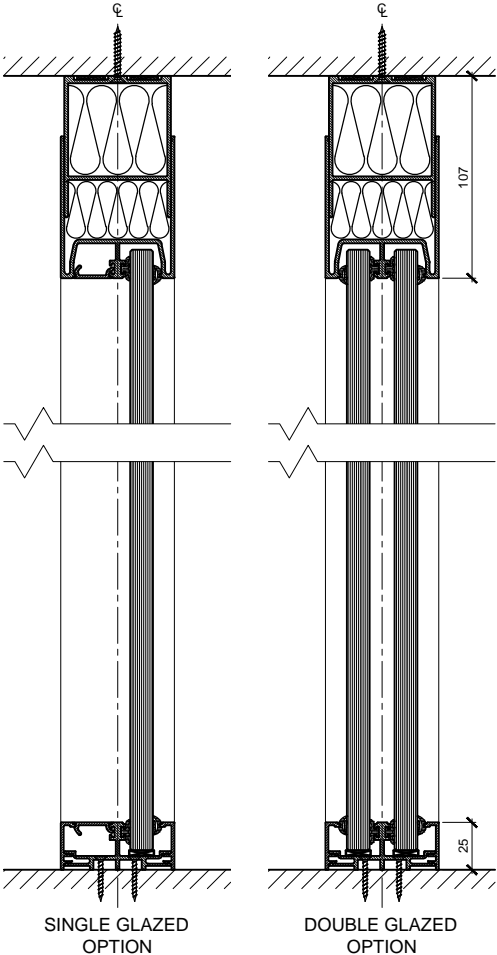
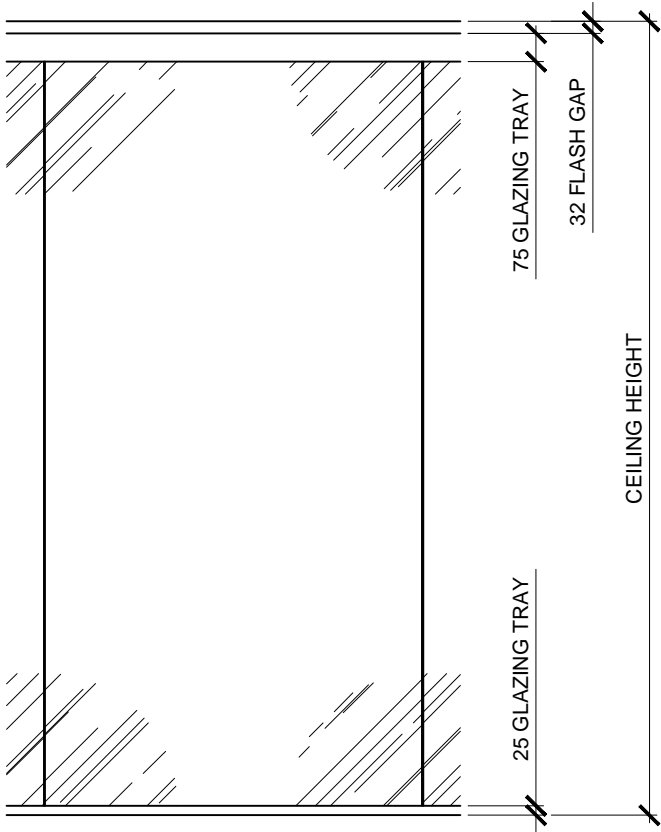


Vosseler Lite 2-60



CEILING HEIGHT	
DESIGN HEIGHT	
MODULE SIZE	
CEILING TYPE	
FLOOR FINISH	

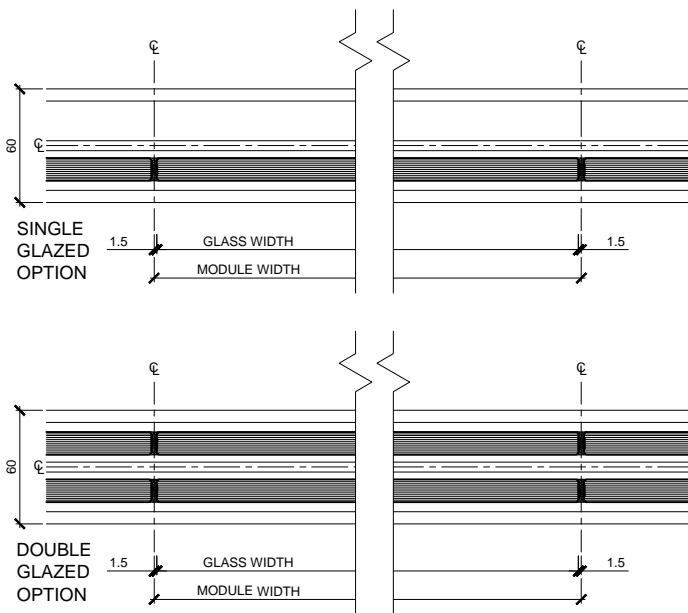
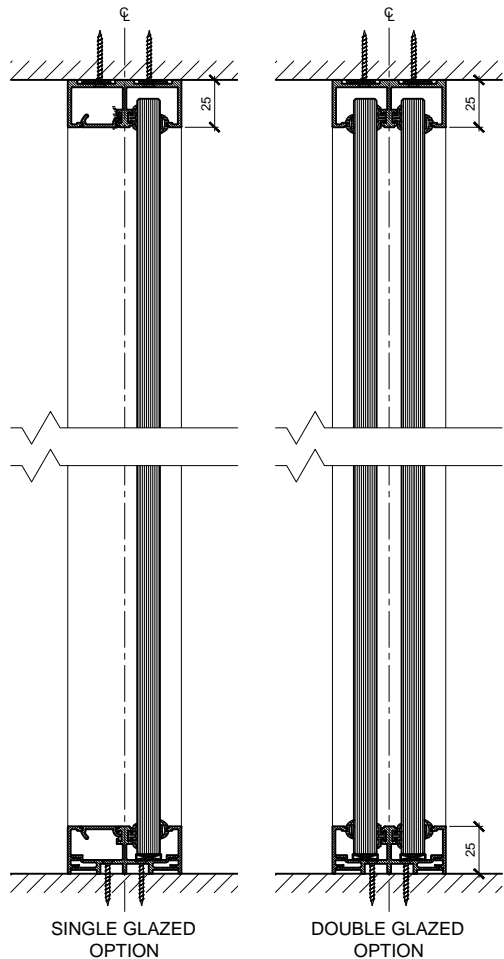
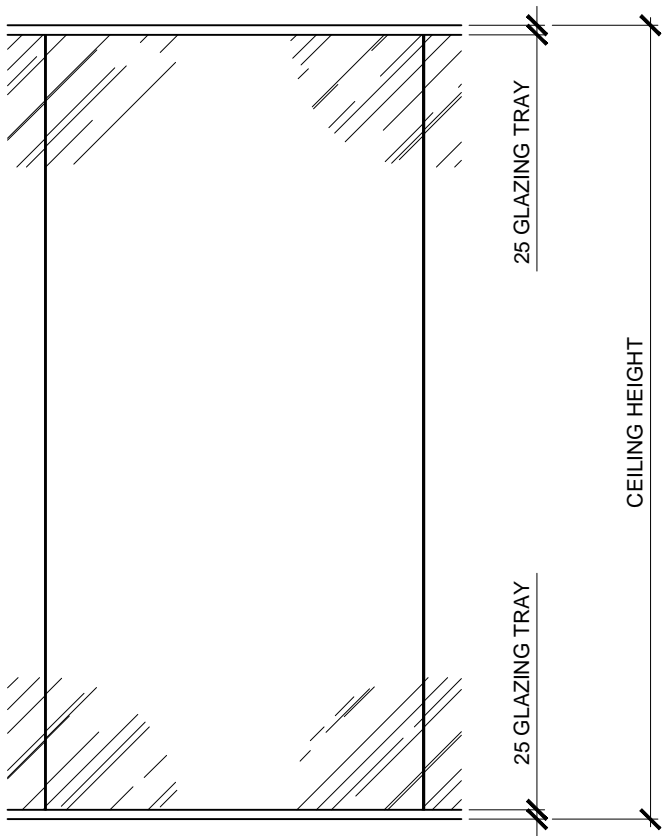
GLASS WIDTH = MODULE WIDTH - 3

=

GLASS HEIGHT = DESIGN HEIGHT - \_\_\_\_

=

Vosseler Lite 2-60



CEILING HEIGHT	
DESIGN HEIGHT	
MODULE SIZE	
CEILING TYPE	
FLOOR FINISH	

GLASS WIDTH = MODULE WIDTH - 3

=

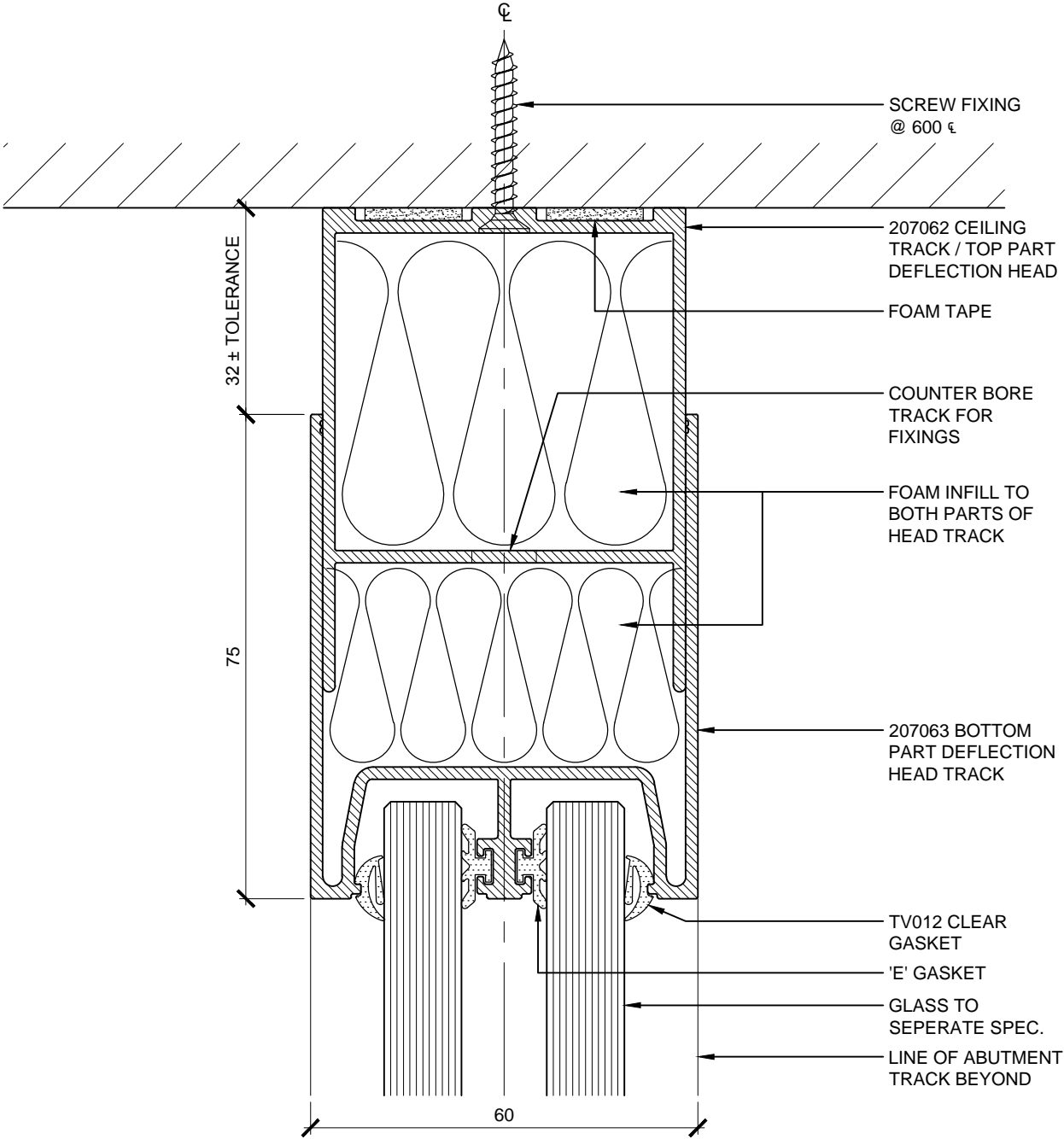
GLASS HEIGHT = DESIGN HEIGHT -

=

Head - Deflection +/- 25mm

Scale 1:1

Vosseler Lite 2-60

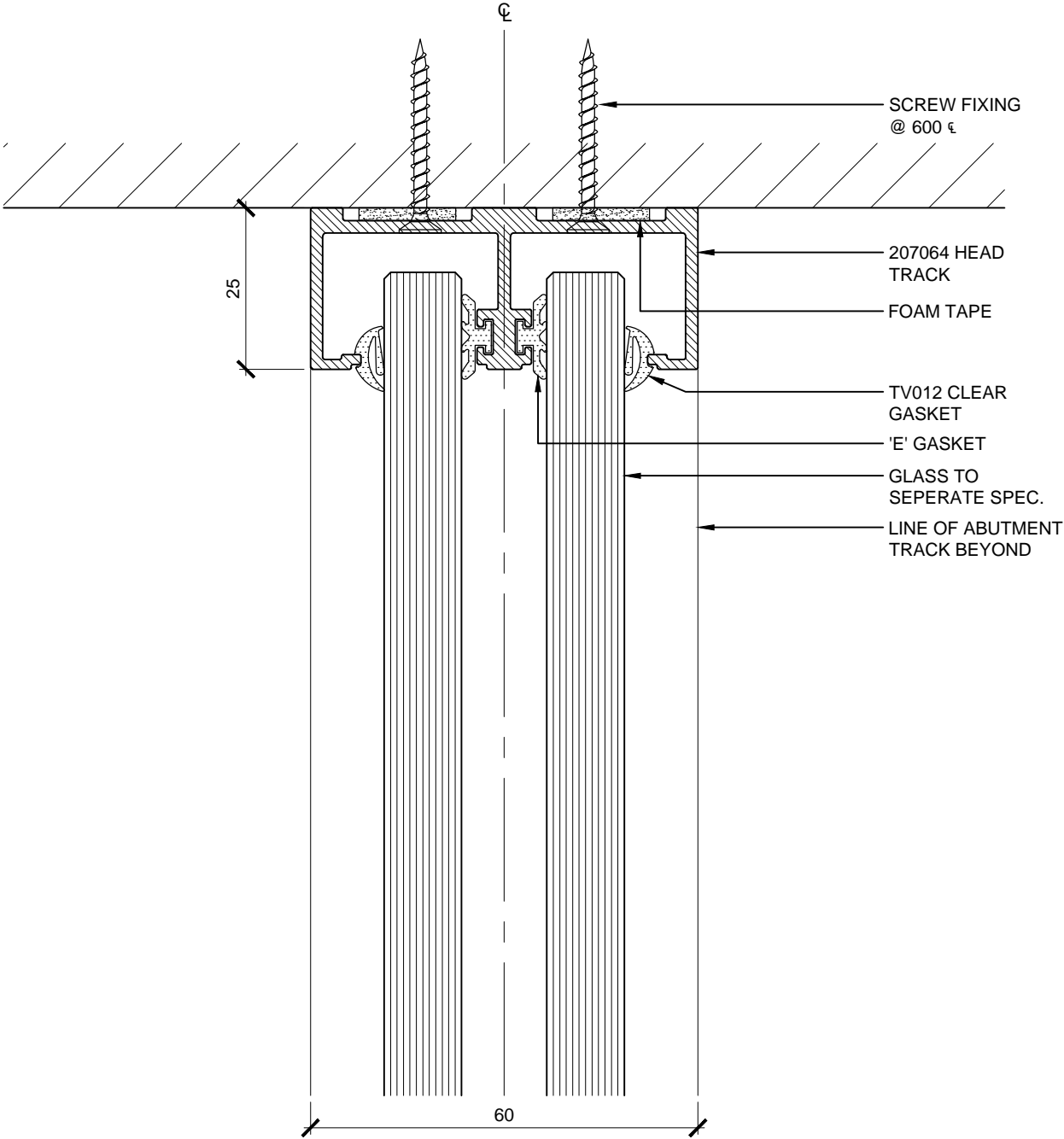


MATERIALS SCHEDULE			
REF	SIZE	FINISH	DESCRIPTION
207062	56 x 75mm APPROX	-	CEILING TRACK / TOP PART DEFLECTION HEAD TRACK
207063	60 x 75mm APPROX	-	BOTTOM PART DEFLECTION HEAD GLAZING TRACK
	15 x 3mm	WHITE	SINGLE SIDED FOAM TAPE
TV012	1-2mm	CLEAR	PUSH FIT GLAZING GASKET
E035	10 x 3mm	BLACK	CAPTIVE 'E' GASKET
	12mm OR 12.8mm x SITE DIM	PAR	GLASS TO SEPERATE SPECIFICATION
			FOAM INFILL TO TRACK

Head - No Deflection

Scale 1:1

Vosseler Lite 2-60

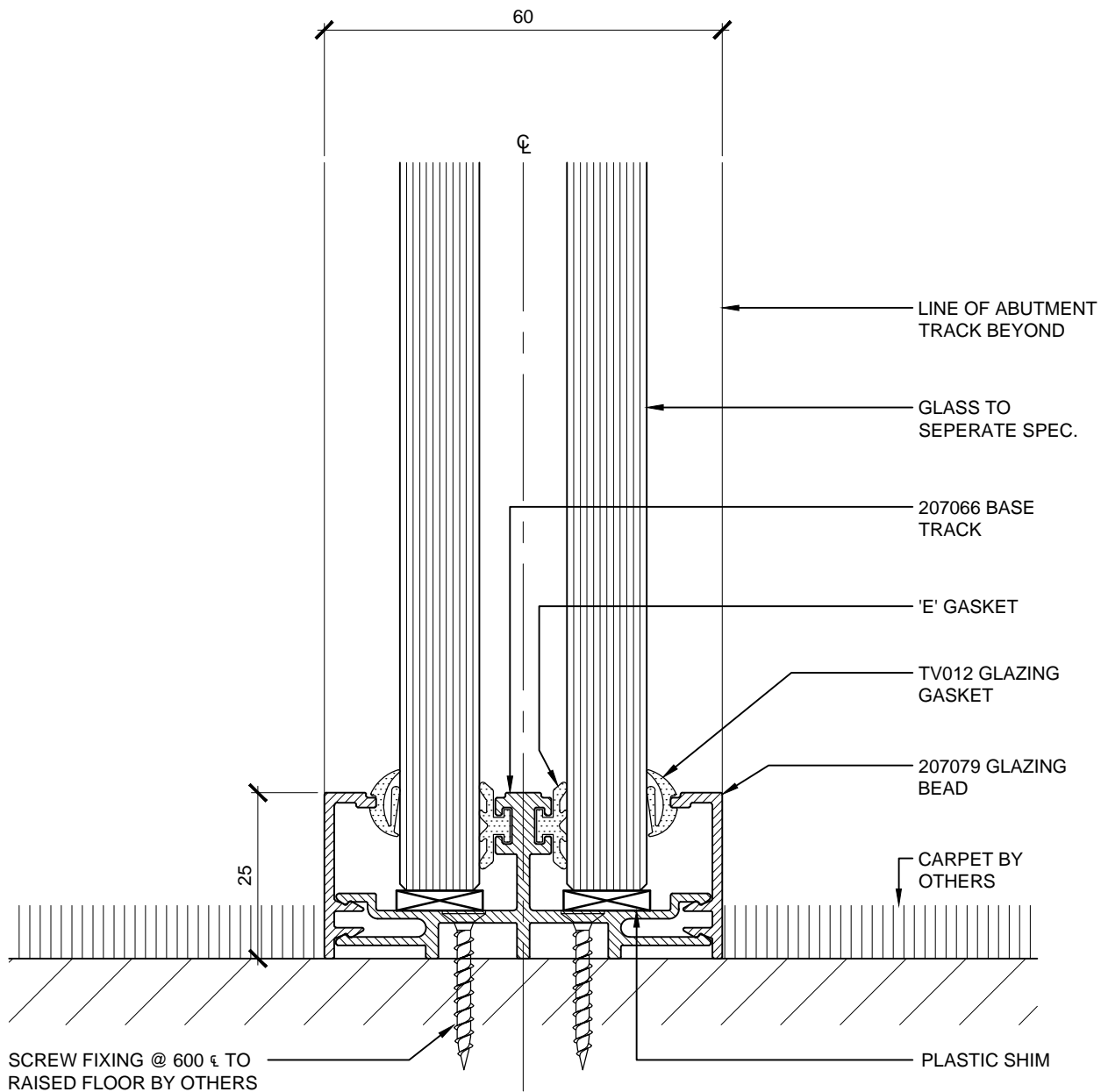


MATERIALS SCHEDULE			
REF	SIZE	FINISH	DESCRIPTION
207064	60 x 25mm APPROX	-	HEAD GLAZING TRACK
	15 x 3mm	WHITE	SINGLE SIDED FOAM TAPE
TV012	1-2mm	CLEAR	PUSH FIT GLAZING GASKET
E035	10 x 3mm	BLACK	CAPTIVE 'E' GASKET
	12mm OR 12.8mm x SITE DIM	PAR	GLASS TO SEPERATE SPECIFICATION

Base

Scale 1:1

Vosseler Lite 2-60

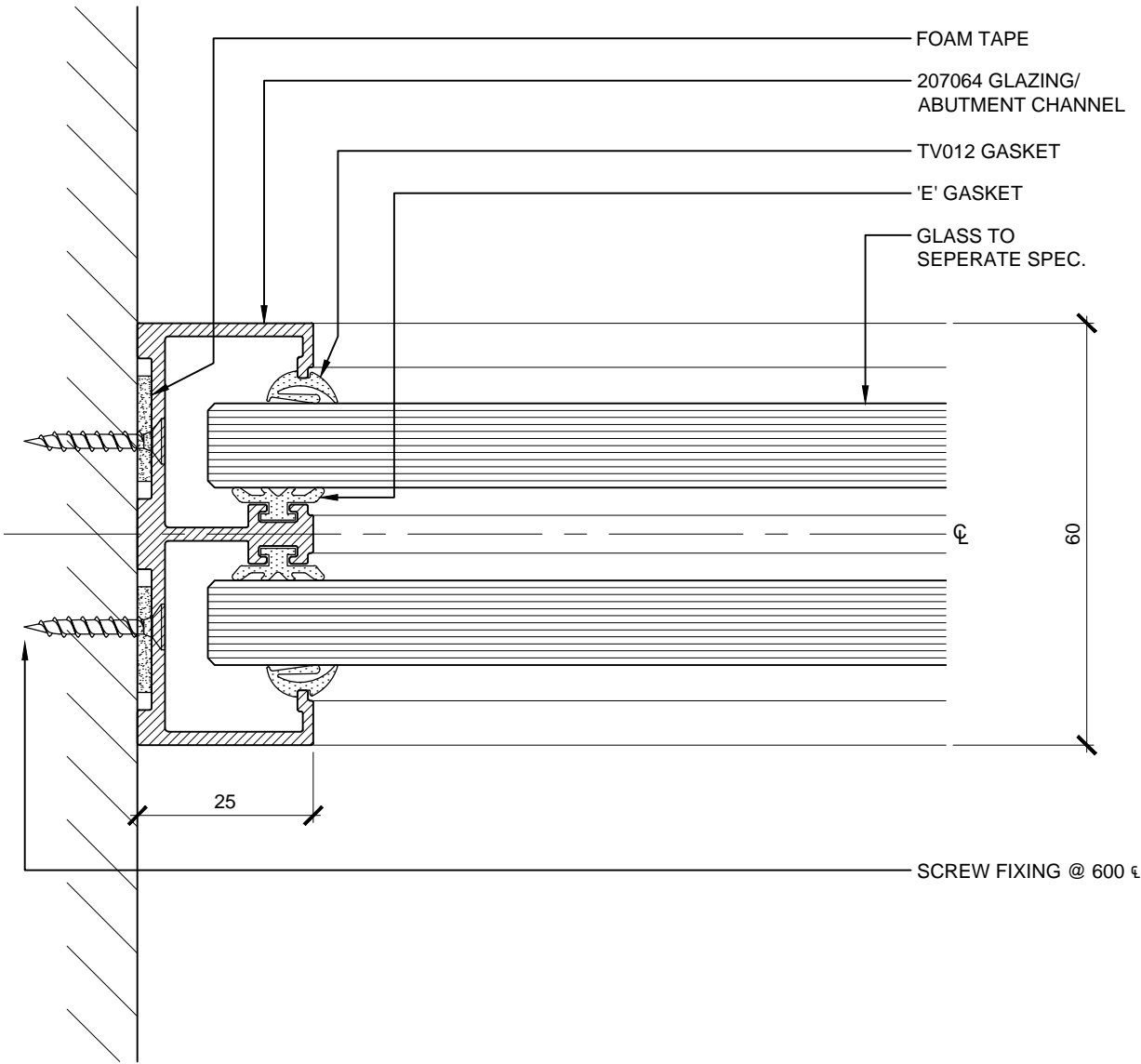


MATERIALS SCHEDULE			
REF	SIZE	FINISH	DESCRIPTION
207066	57 x 25mm APPROX	-	BASE GLAZING TRACK
207079	25 x 8mm APPROX	-	GLAZING BEAD
TV012	1-2mm	CLEAR	PUSH FIT GLAZING GASKET
E035	10 x 3mm	BLACK	CAPTIVE 'E' GASKET
	12mm OR 12.8mm x SITE DIM	PAR	GLASS TO SEPERATE SPECIFICATION
	VARIOUS		PLASTIC SHIM

Abutment

Scale 1:1

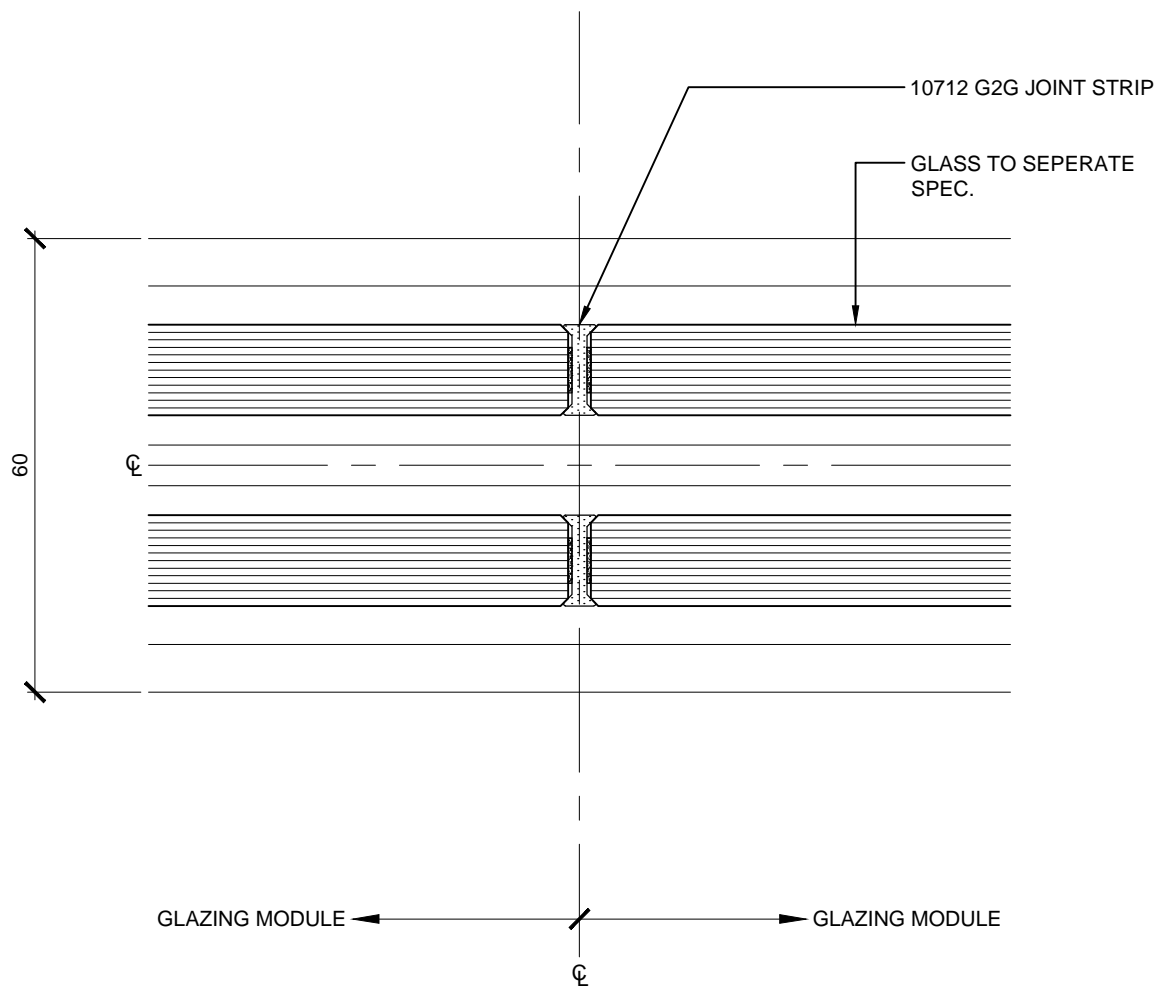
Vosseler Lite 2-60



MATERIALS SCHEDULE			
REF	SIZE	FINISH	DESCRIPTION
207064	60 x 25mm APPROX	-	GLAZING / ABUTMENT CHANNEL
	15 x 3mm	WHITE	SINGLE SIDED FOAM TAPE
TV012	1-2mm	CLEAR	PUSH FIT GLAZING GASKET
E035	10 x 3mm	BLACK	CAPTIVE 'E' GASKET
	12mm OR 12.8mm x SITE DIM	PAR	GLASS TO SEPERATE SPECIFICATION

Module Junction  
Scale 1:1

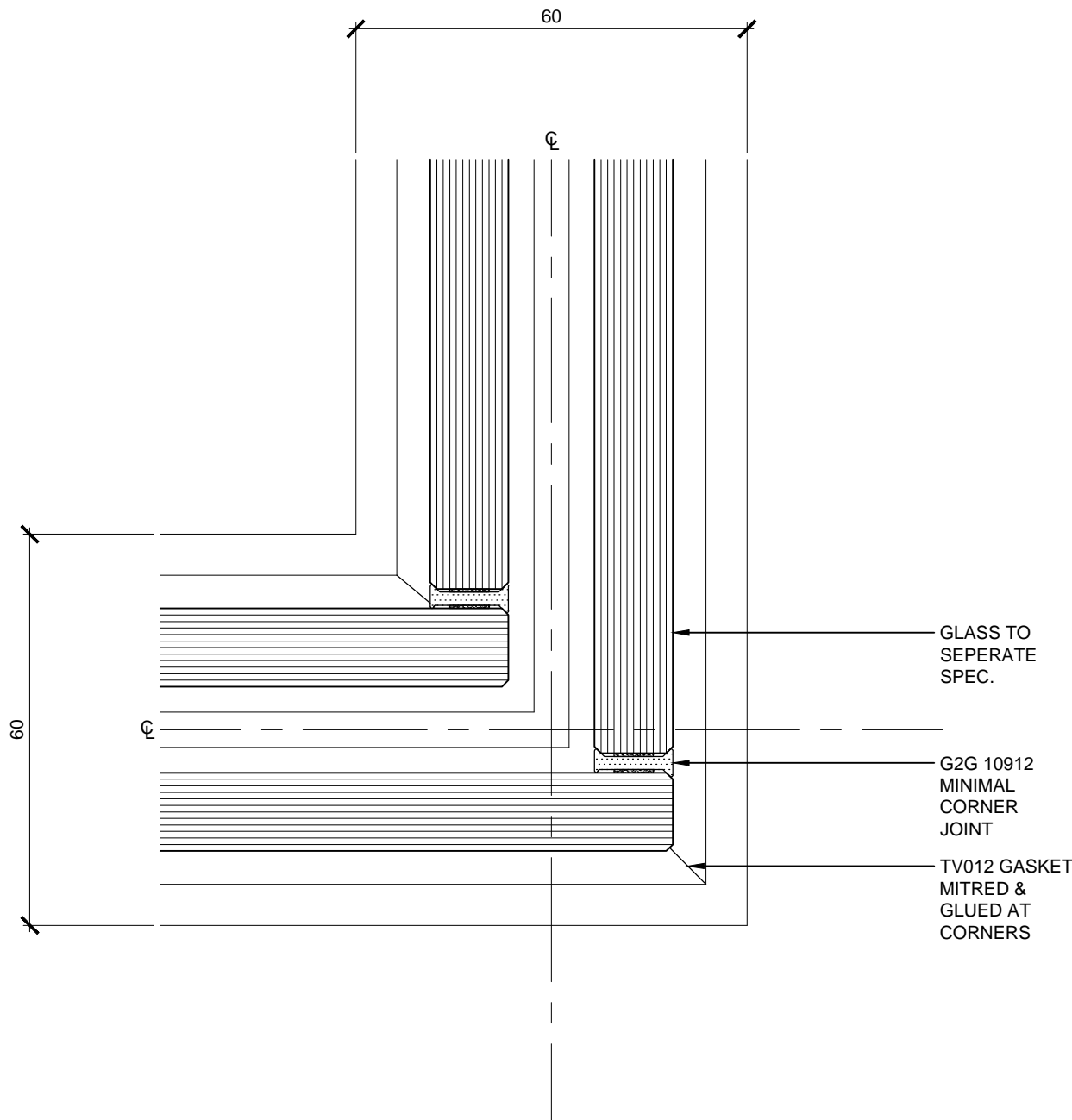
Vosseler Lite 2-60



MATERIALS SCHEDULE			
REF	SIZE	FINISH	DESCRIPTION
10712	12mm	CLEAR	REDDIPLEX G2G GLASS JOINT STRIP
	12mm OR 12.8mm x SITE DIM	PAR	GLASS TO SEPERATE SPECIFICATION

Corner  
Scale 1:1

Vosseler Lite 2-60

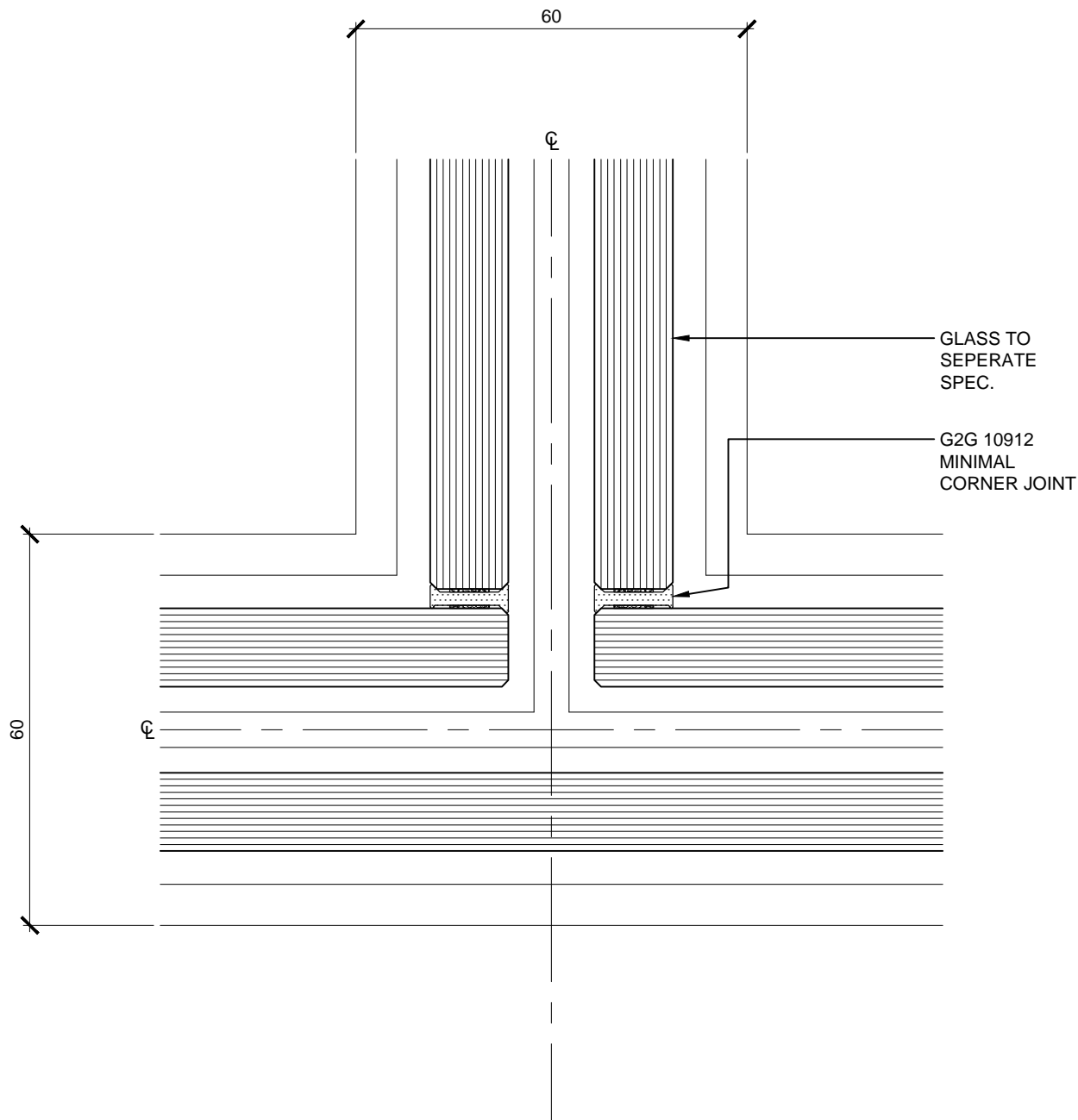


MATERIALS SCHEDULE			
REF	SIZE	FINISH	DESCRIPTION
10912	12mm	CLEAR	REDDIPLEX G2G MINIMAL CORNER JOINT
	12mm OR 12.8mm x SITE DIM	PAR	GLASS TO SEPERATE SPECIFICATION



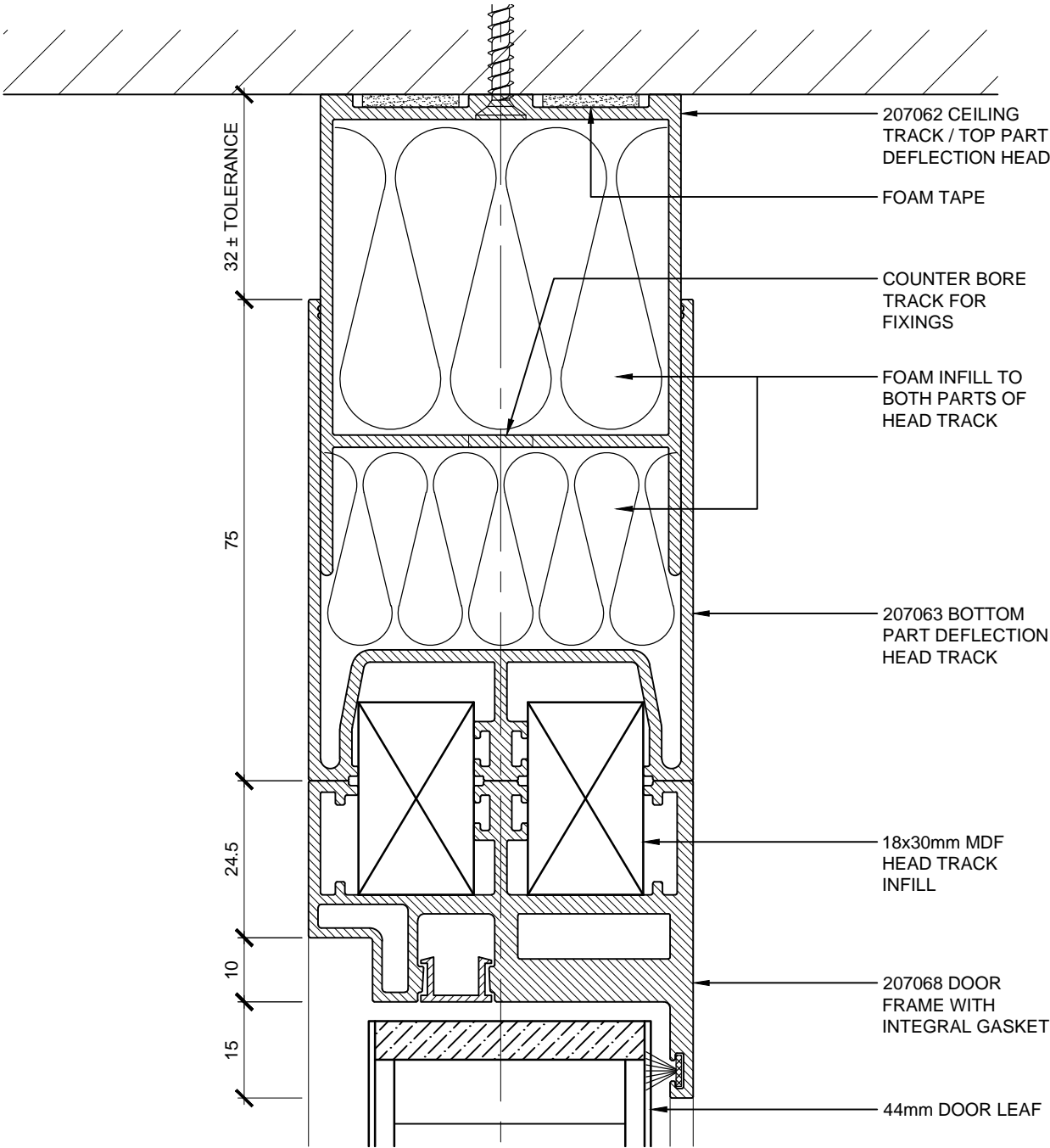
T-Junction  
Scale 1:1

Vosseler Lite 2-60



MATERIALS SCHEDULE			
REF	SIZE	FINISH	DESCRIPTION
10912	12mm	CLEAR	REDDIPLEX G2G MINIMAL CORNER JOINT
	12mm OR 12.8mm x SITE DIM	PAR	GLASS TO SEPERATE SPECIFICATION

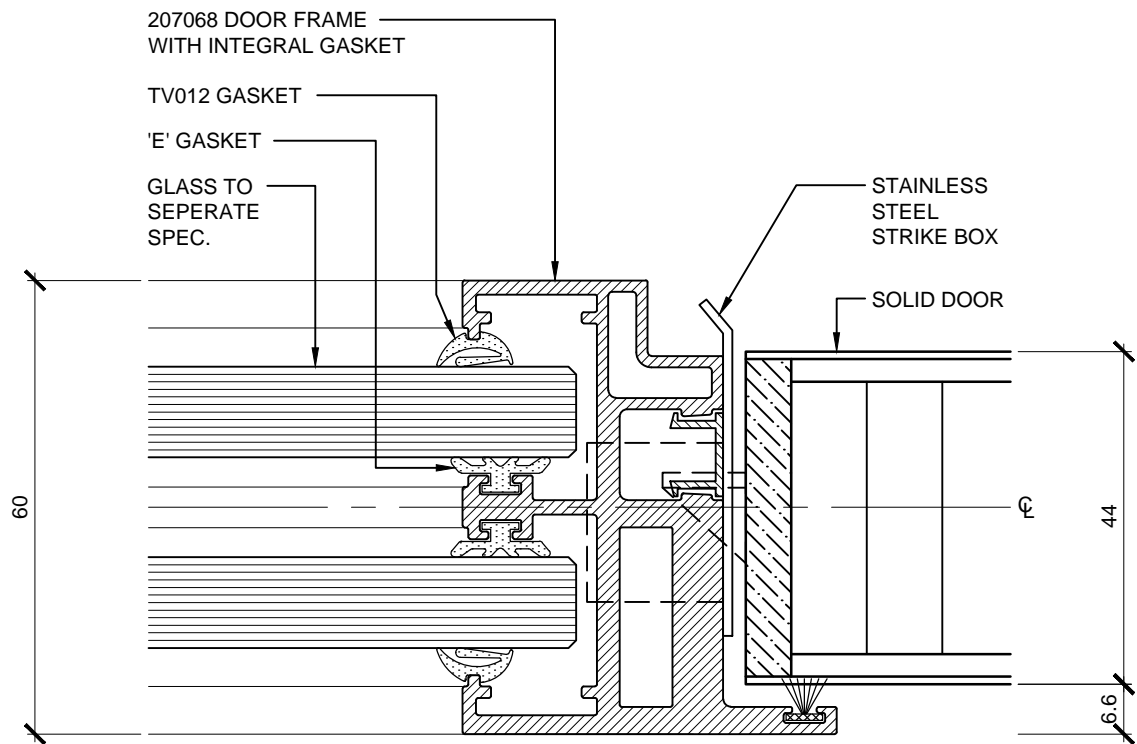
Vosseler Lite 2-60



MATERIALS SCHEDULE			
REF	SIZE	FINISH	DESCRIPTION
207062	56 x 75mm APPROX	-	CEILING TRACK / TOP PART DEFLECTION HEAD TRACK
207063	60 x 75mm APPROX	-	BOTTOM PART DEFLECTION HEAD GLAZING TRACK
	15 x 3mm	WHITE	SINGLE SIDED FOAM TAPE
TBC	TBC	TBC	FOAM INFILL TO TRACK
	30 x 18 x 1000mm		MDF PACKER / INFILL
207068	50 x 60mm APPROX	-	DOOR FRAME
	44mm	-	SOLID DOOR

Door Frame  
Scale 1:1

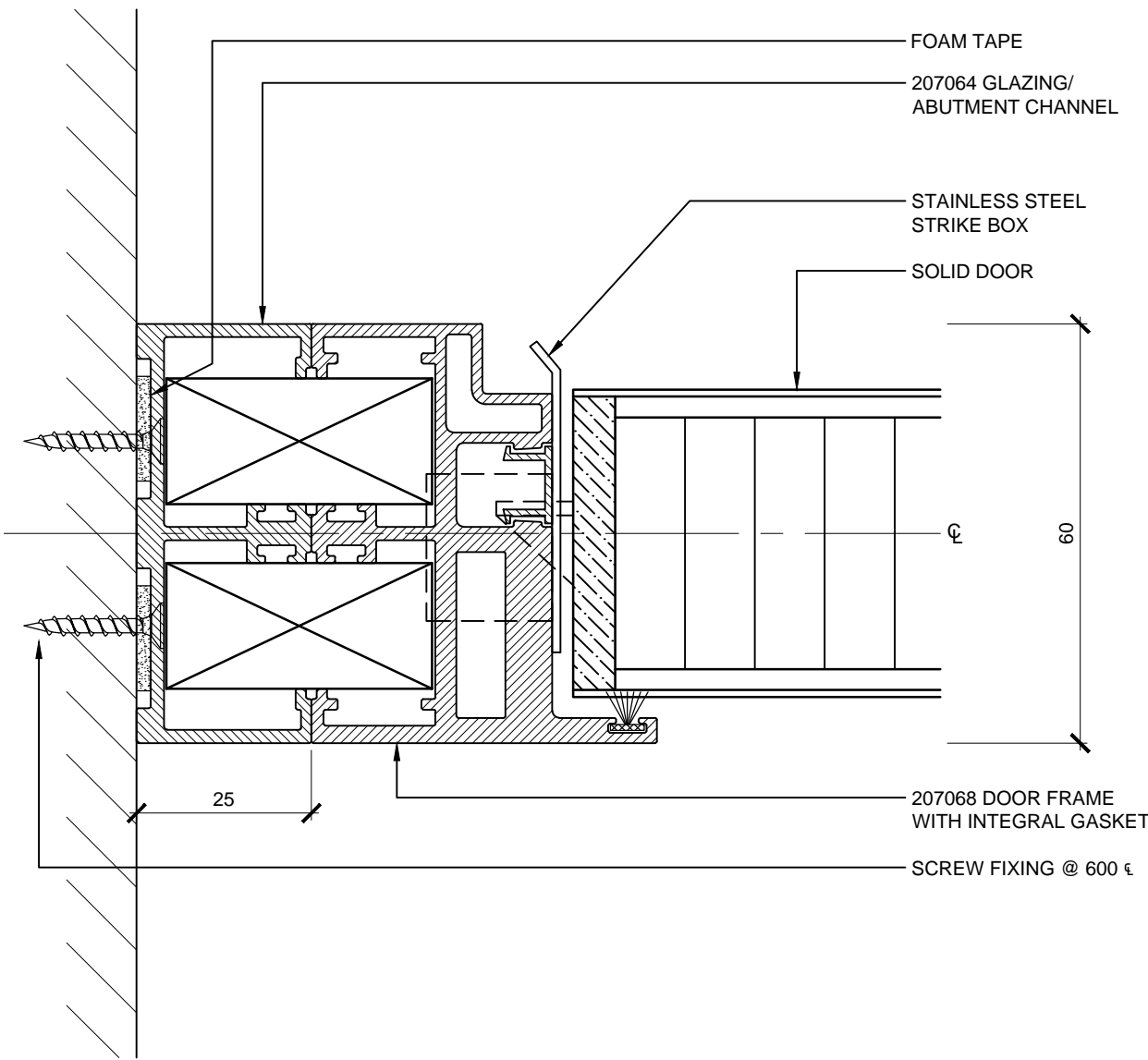
Vosseler Lite 2-60



MATERIALS SCHEDULE			
REF	SIZE	FINISH	DESCRIPTION
207068	50 x 60mm APPROX	-	DOOR FRAME
	44mm	-	SOLID DOOR
TV012	1-2mm	CLEAR	PUSH FIT GLAZING GASKET
E035	10 x 3mm	BLACK	CAPTIVE 'E' GASKET
	12mm OR 12.8mm x SITE DIM	PAR	GLASS TO SEPERATE SPECIFICATION
	TO DETAIL	STAINLESS STEEL	STRIKE BOX

Door Frame  
Scale 1:1

Vosseler Lite 2-60



MATERIALS SCHEDULE			
REF	SIZE	FINISH	DESCRIPTION
207064	60 x 25mm APPROX	-	GLAZING / ABUTMENT CHANNEL
	15 x 3mm	WHITE	SINGLE SIDED FOAM TAPE
207068	50 x 60mm APPROX	-	DOOR FRAME
	44mm	-	SOLID DOOR
	TO DETAIL	STAINLESS STEEL	STRIKE BOX