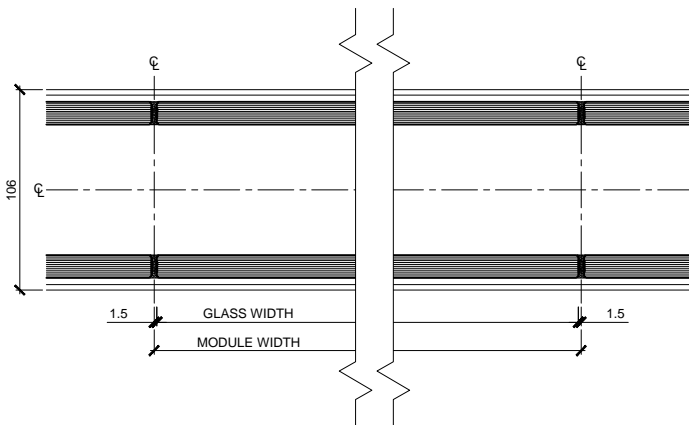
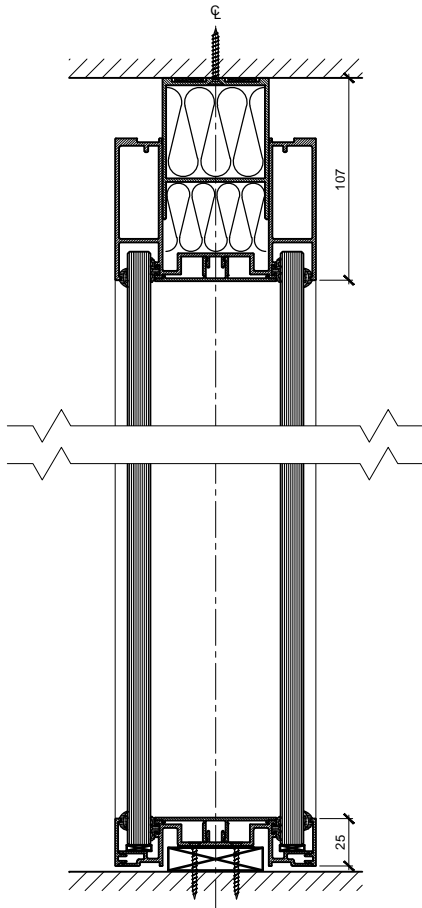
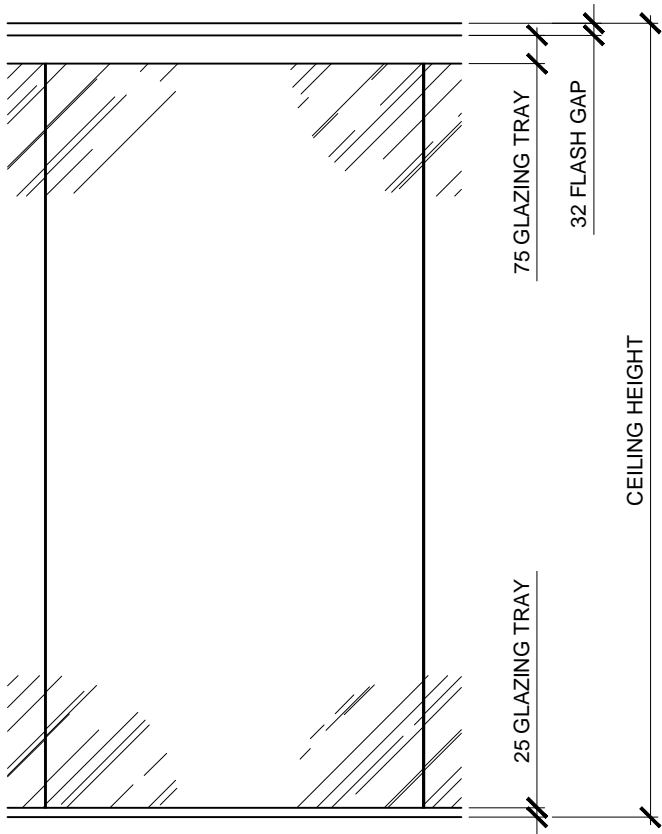


Vosseler Lite 2-106



CEILING HEIGHT	
DESIGN HEIGHT	
MODULE SIZE	
CEILING TYPE	
FLOOR FINISH	

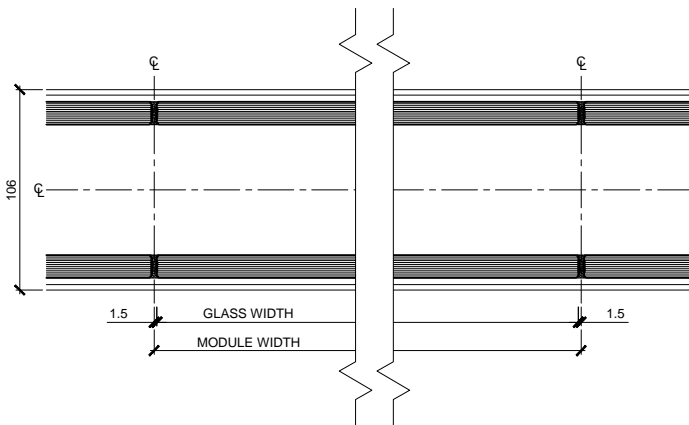
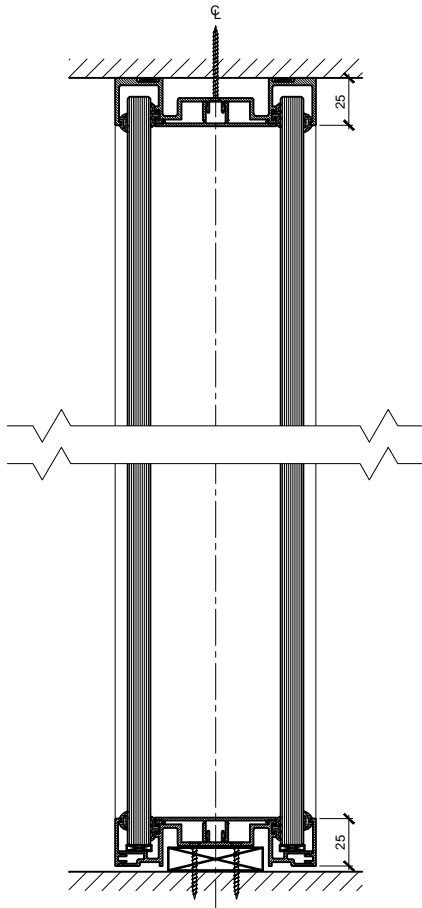
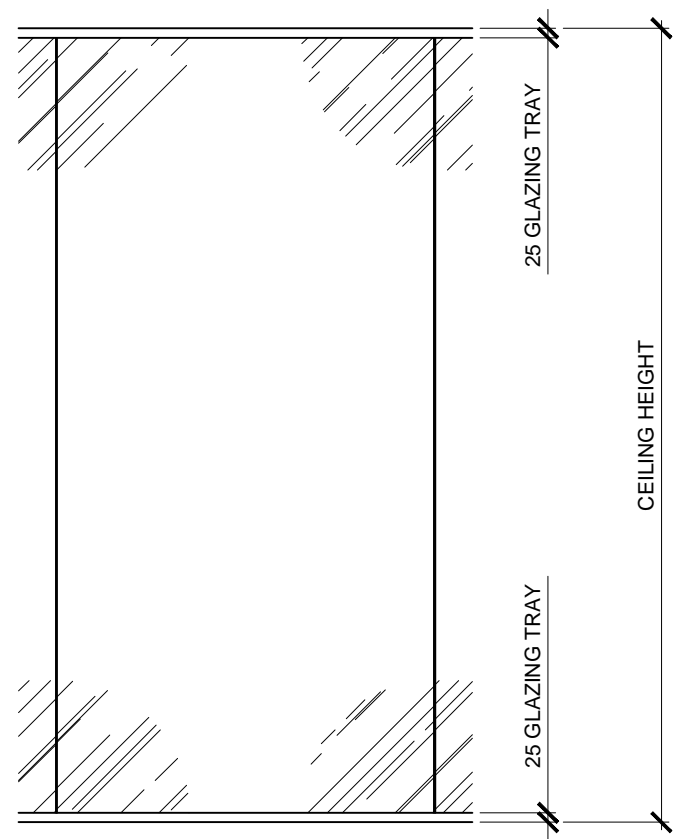
GLASS WIDTH = MODULE WIDTH - 3

=

GLASS HEIGHT = DESIGN HEIGHT - __

=

Vosseler Lite 2-106



CEILING HEIGHT	
DESIGN HEIGHT	
MODULE SIZE	
CEILING TYPE	
FLOOR FINISH	

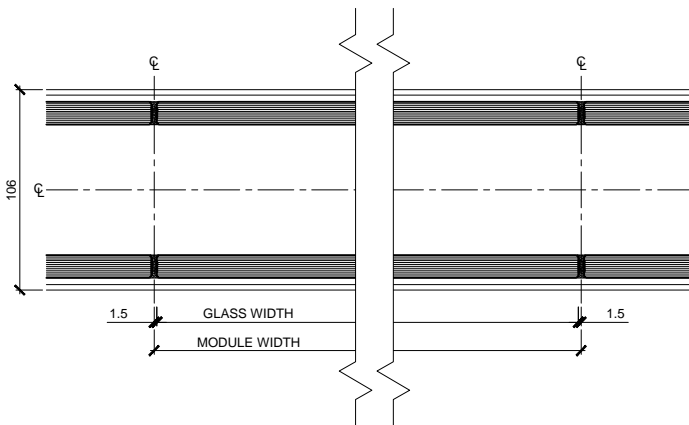
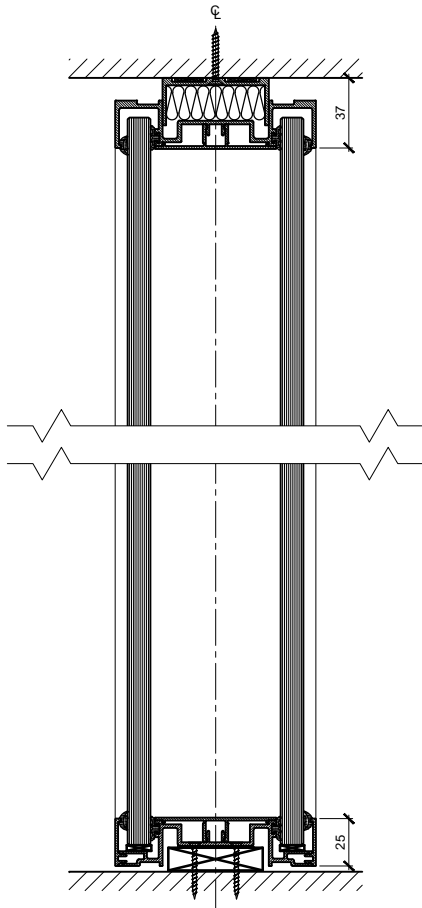
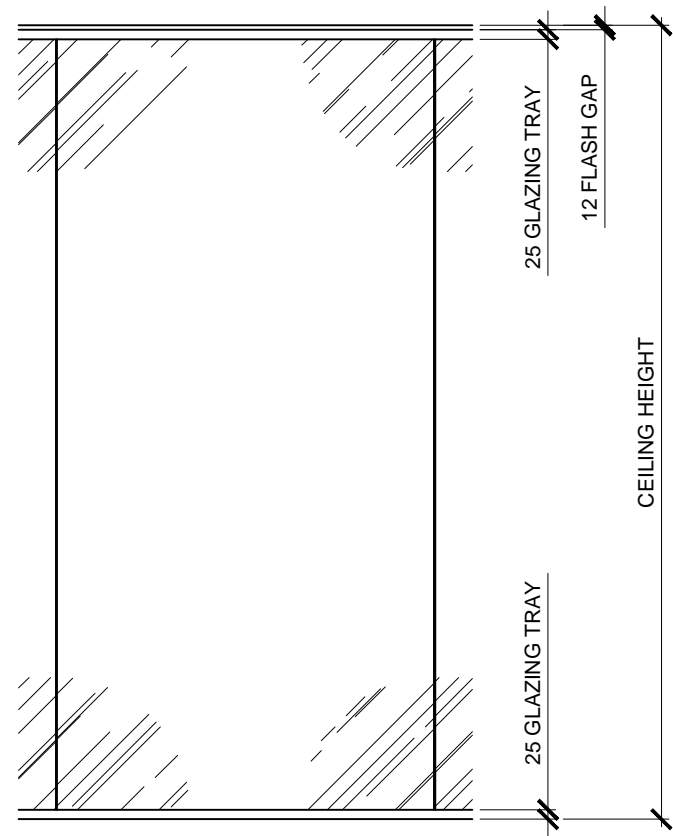
GLASS WIDTH = MODULE WIDTH - 3

=

GLASS HEIGHT = DESIGN HEIGHT - __

=

Vosseler Lite 2-106



CEILING HEIGHT	
DESIGN HEIGHT	
MODULE SIZE	
CEILING TYPE	
FLOOR FINISH	

GLASS WIDTH = MODULE WIDTH - 3

=

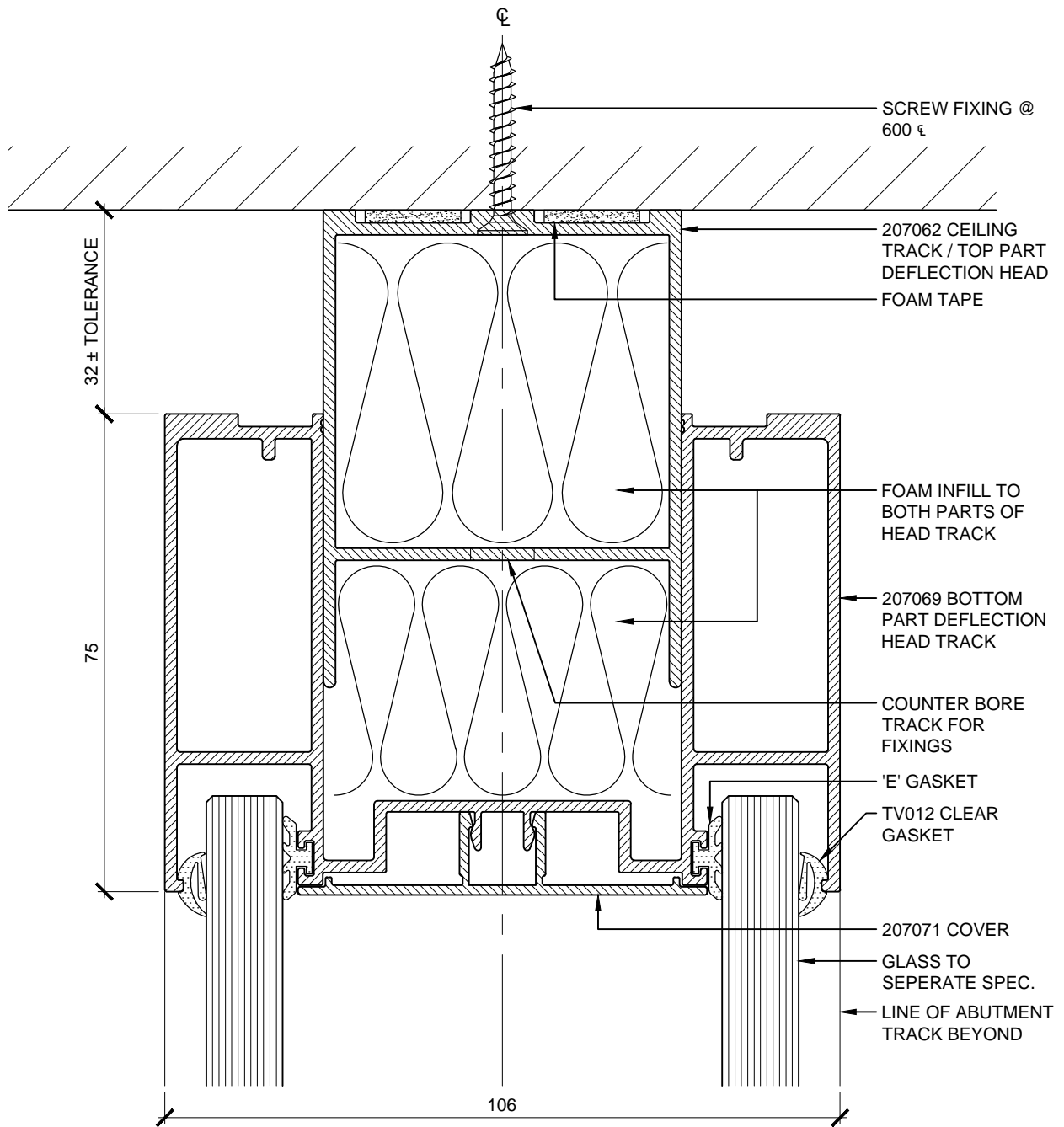
GLASS HEIGHT = DESIGN HEIGHT - __

=

Head - Deflection +/- 25mm

Scale 1:1

Vosseler Lite 2-106

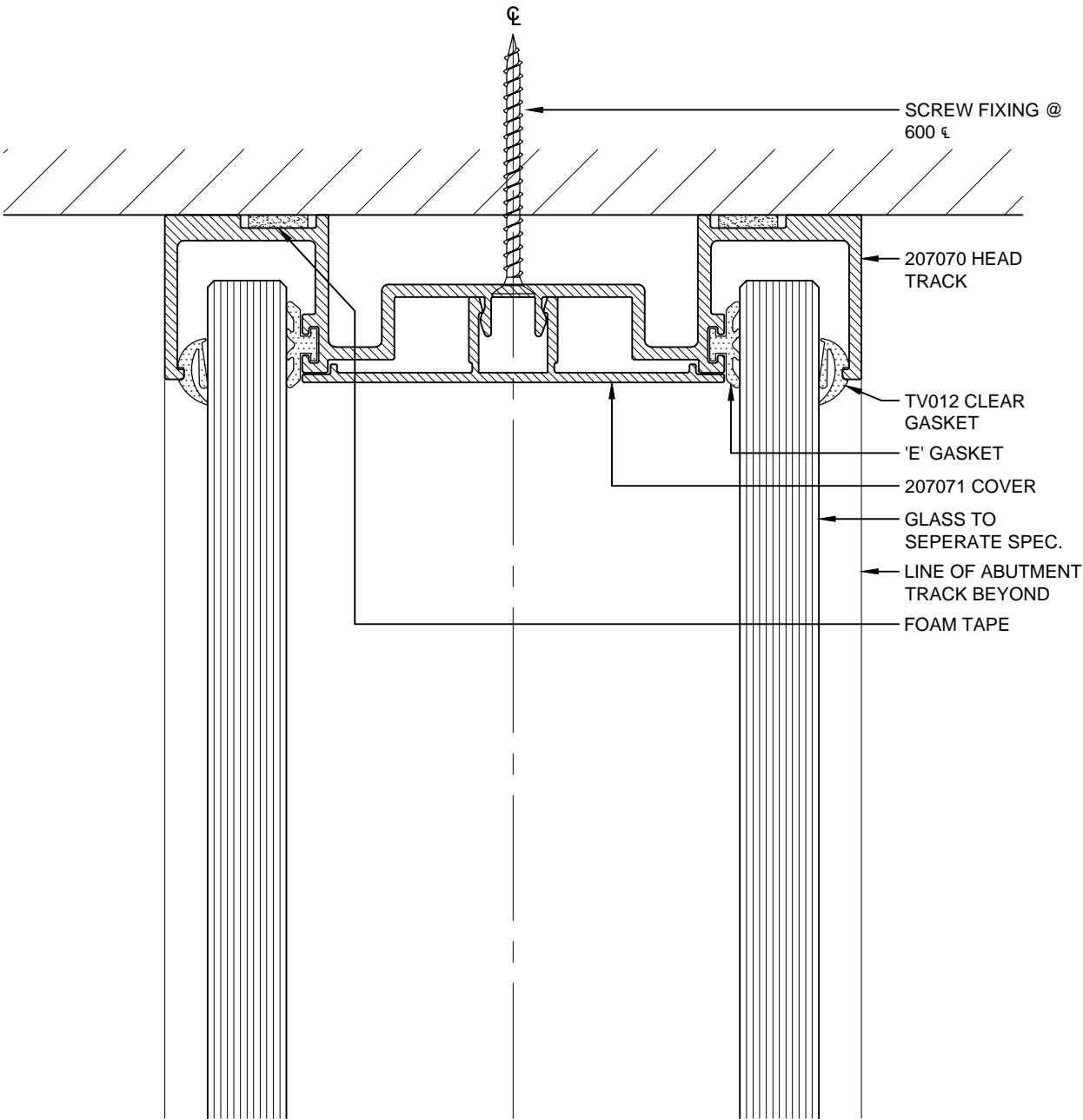


MATERIALS SCHEDULE			
REF	SIZE	FINISH	DESCRIPTION
207062	56 x 75mm APPROX	-	CEILING TRACK / TOP PART DEFLECTION HEAD TRACK
207069	106 x 75mm APPROX	-	BOTTOM PART DEFLECTION HEAD GLAZING TRACK
207071	64mm APPROX	-	COVER
	15 x 3mm	WHITE	SINGLE SIDED FOAM TAPE
TV012	1-2mm	CLEAR	PUSH FIT GLAZING GASKET
E035	10 x 3mm	BLACK	CAPTIVE 'E' GASKET
	12mm OR 12.8mm x SITE DIM	PAR	GLASS TO SEPERATE SPECIFICATION
TBC	TBC	TBC	FOAM INFILL TO TRACK

Head - No Deflection

Scale 1:1

Vosseler Lite 2-106

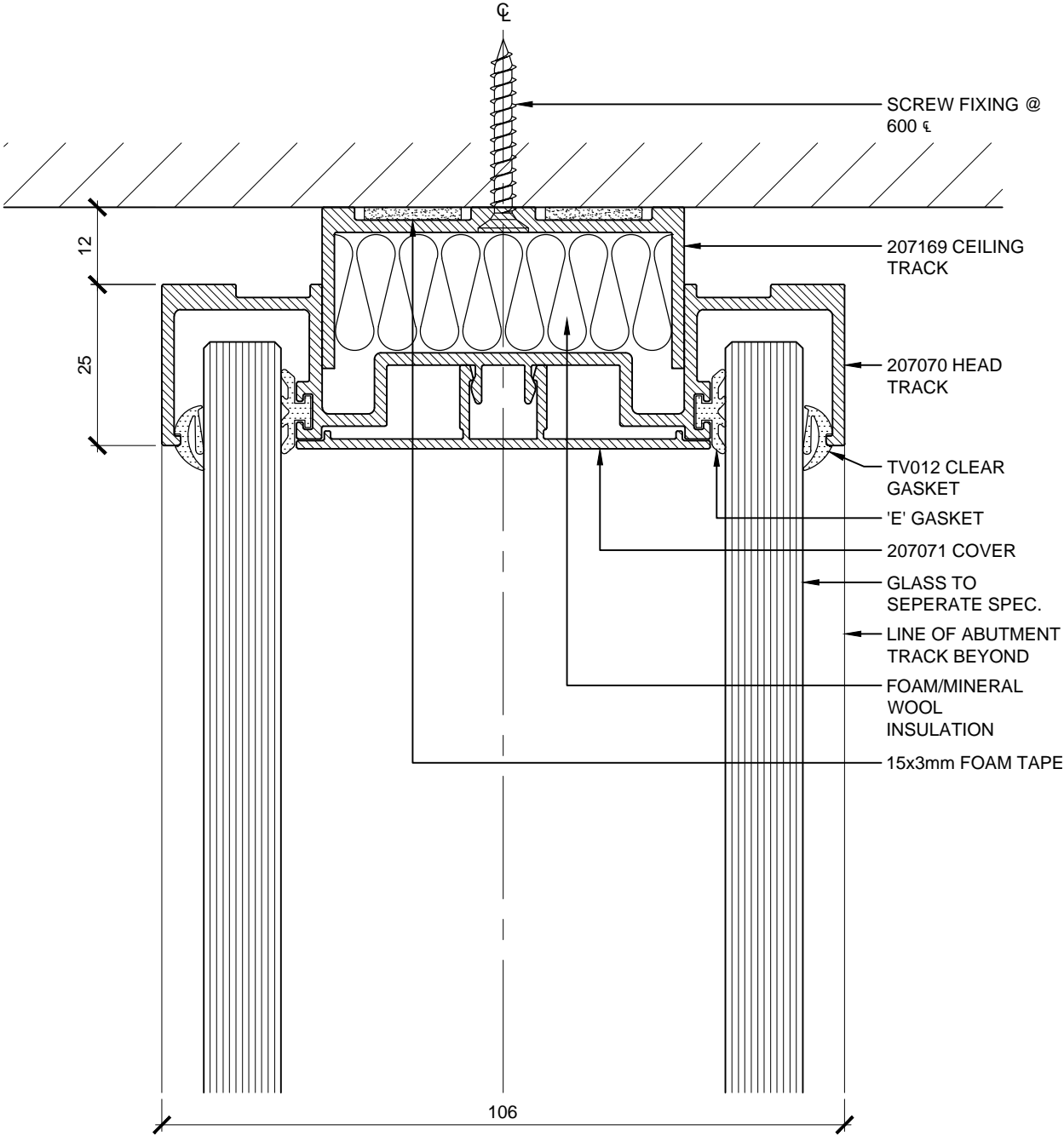


MATERIALS SCHEDULE			
REF	SIZE	FINISH	DESCRIPTION
207070	106 x 25mm APPROX	-	HEAD GLAZING TRACK
207071	64mm APPROX	-	COVER
	19 x 3mm	WHITE	SINGLE SIDED FOAM TAPE
TV012	1-2mm	CLEAR	PUSH FIT GLAZING GASKET
E035	10 x 3mm	BLACK	CAPTIVE 'E' GASKET
	12mm OR 12.8mm x SITE DIM	PAR	GLASS TO SEPERATE SPECIFICATION

Head - With Recess

Scale 1:1

Vosseler Lite 2-106

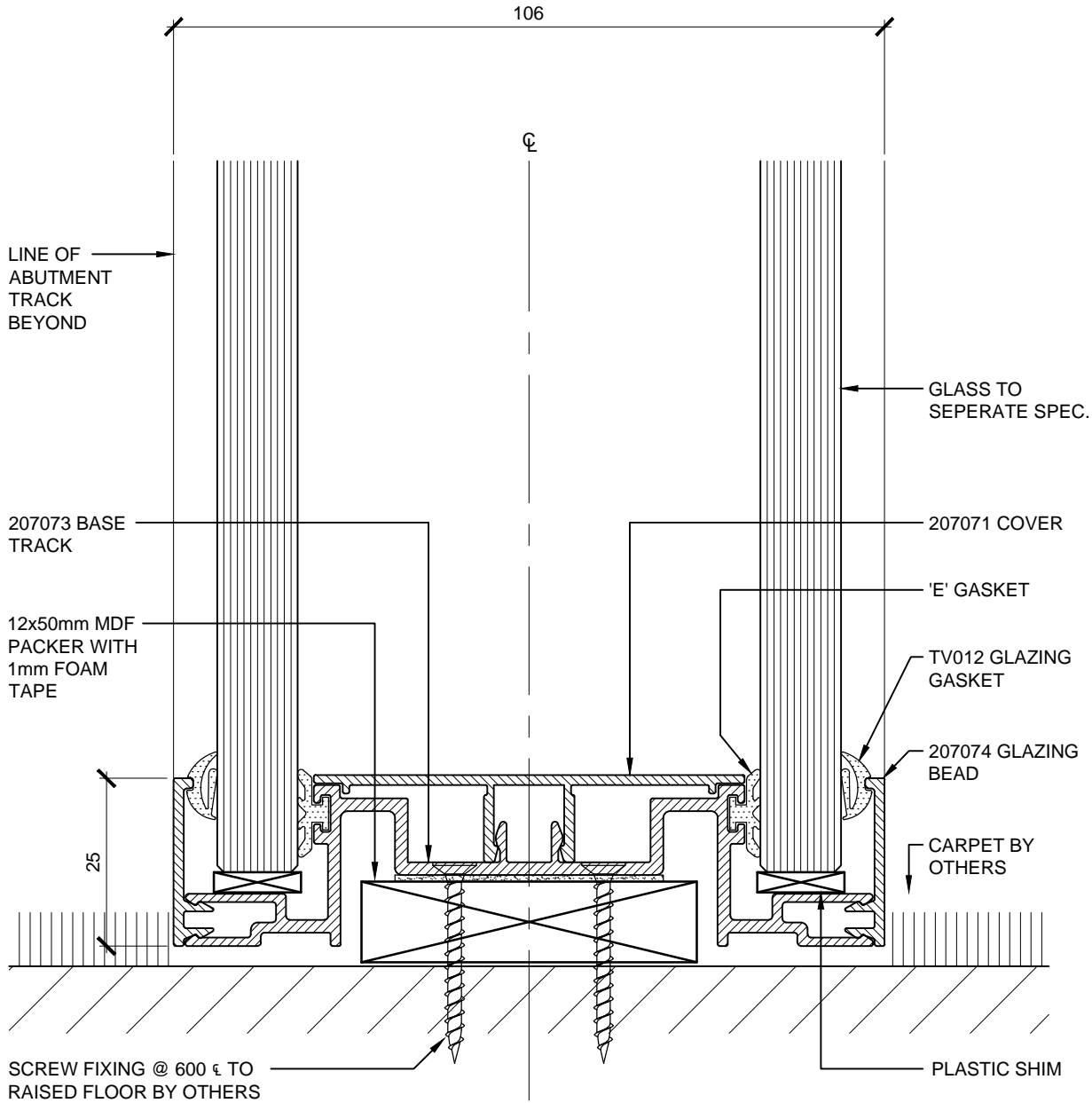


MATERIALS SCHEDULE			
REF	SIZE	FINISH	DESCRIPTION
207169	56 x 25mm APPROX	-	CEILING TRACK
207070	106 x 25mm APPROX	-	HEAD GLAZING TRACK
207071	64mm APPROX	-	COVER
	15 x 3mm	WHITE	SINGLE SIDED FOAM TAPE
TV012	1-2mm	CLEAR	PUSH FIT GLAZING GASKET
E035	10 x 3mm	BLACK	CAPTIVE 'E' GASKET
	12mm OR 12.8mm x SITE DIM	PAR	GLASS TO SEPERATE SPECIFICATION
TBC	TBC	TBC	FOAM INFILL TO TRACK

Base

Scale 1:1

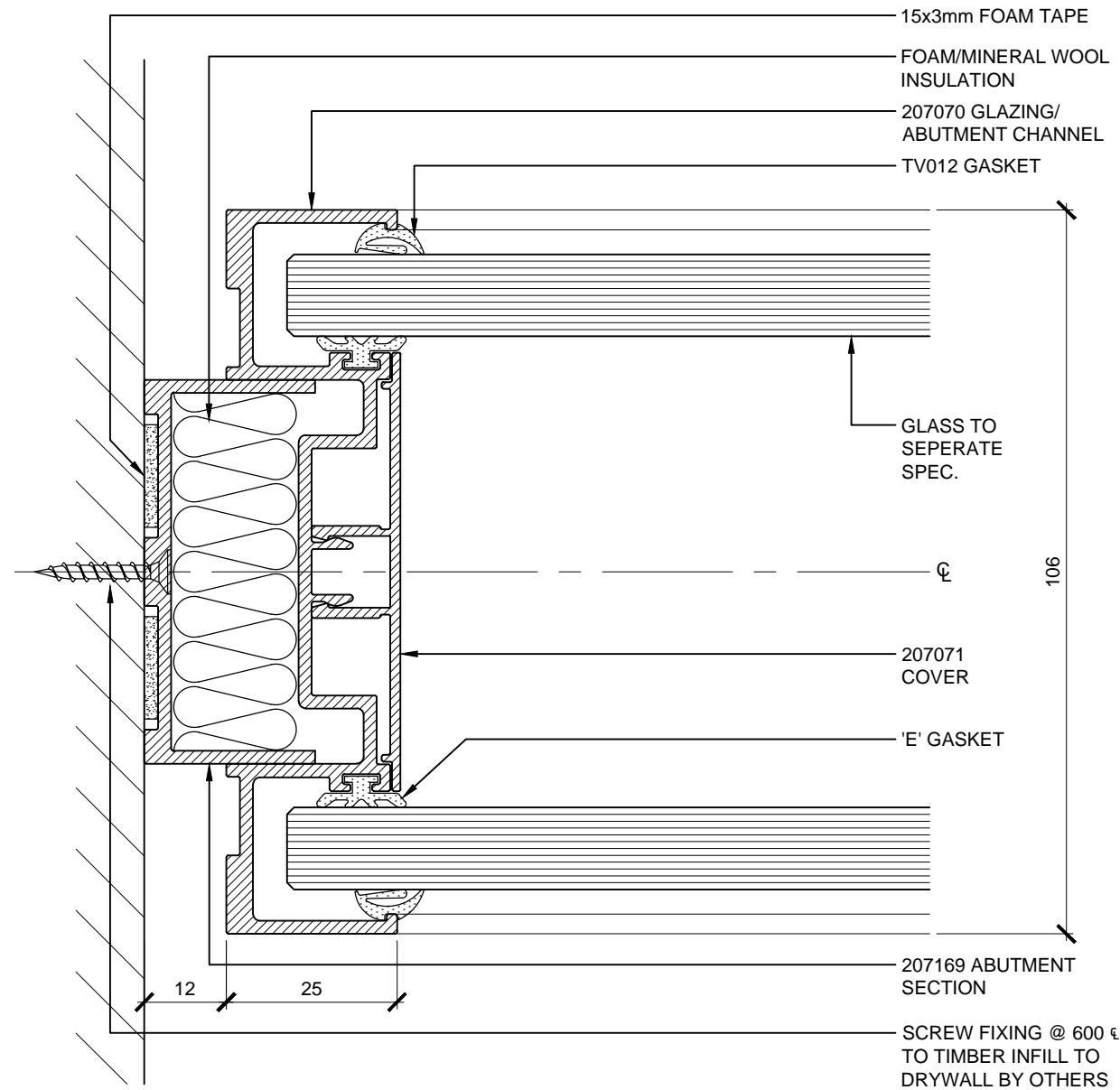
Vosseler Lite 2-106



MATERIALS SCHEDULE			
REF	SIZE	FINISH	DESCRIPTION
207073	103 x 24mm APPROX	-	BASE GLAZING TRACK
207074	25 x 6mm APPROX	-	GLAZING BEAD
207071	64mm APPROX	-	COVER
TV012	1-2mm	CLEAR	PUSH FIT GLAZING GASKET
E035	10 x 3mm	BLACK	CAPTIVE 'E' GASKET
	12mm OR 12.8mm x SITE DIM	PAR	GLASS TO SEPERATE SPECIFICATION
	40 x 1mm	WHITE	SINGLE SIDED FOAM TAPE
	50 x 12mm	UNFINISHED	MDF PACKER
	VARIOUS		PLASTIC SHIM

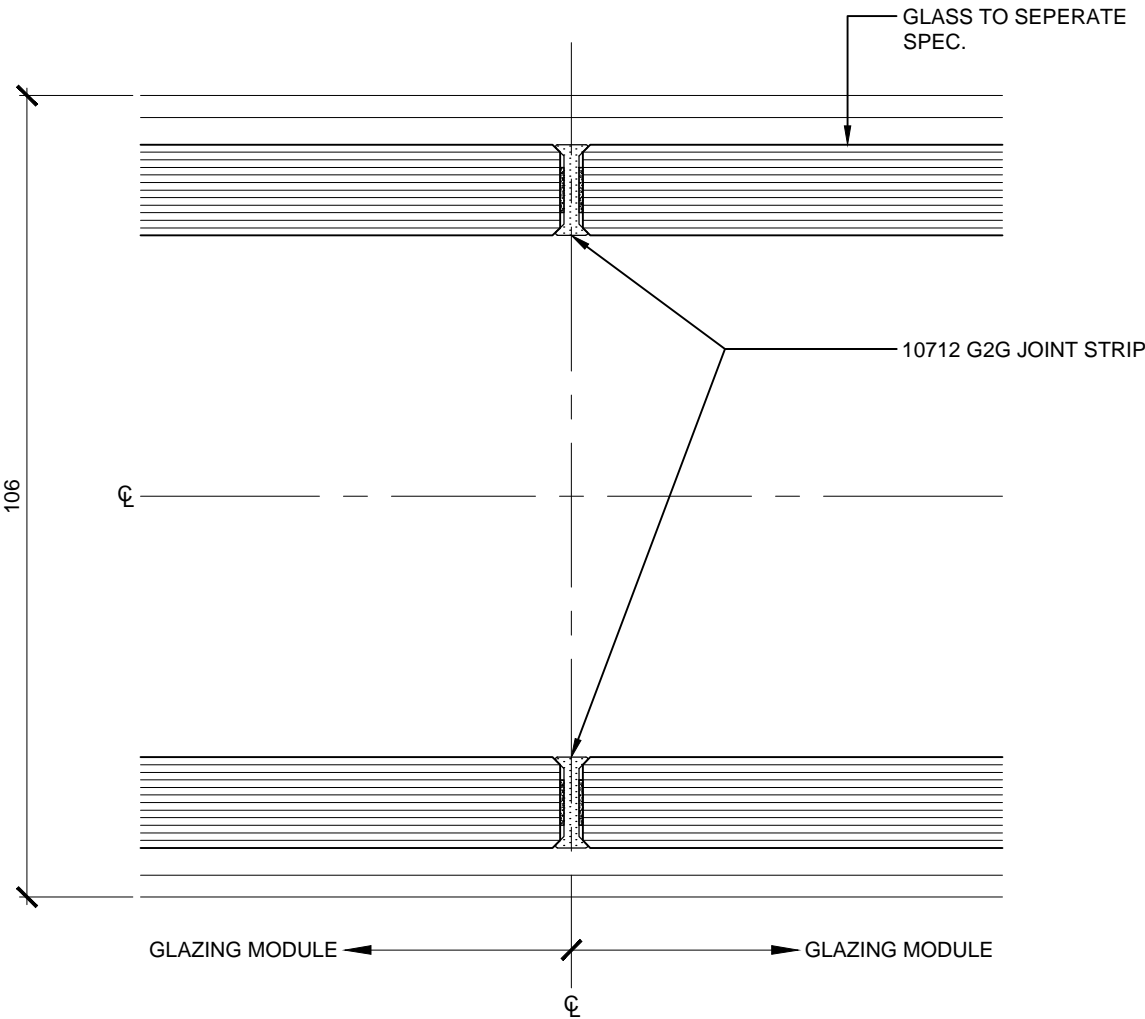
Abutment
Scale 1:1

Vosseler Lite 2-106



MATERIALS SCHEDULE			
REF	SIZE	FINISH	DESCRIPTION
207070	106 x 25mm APPROX	-	GLAZING / ABUTMENT CHANNEL
207169	56 x 25mm APPROX	-	ABUTMENT SECTION
207071	64mm APPROX	-	COVER
	15 x 3mm	WHITE	SINGLE SIDED FOAM TAPE
TV012	1-2mm	CLEAR	PUSH FIT GLAZING GASKET
E035	10 x 3mm	BLACK	CAPTIVE 'E' GASKET
	12mm OR 12.8mm x SITE DIM	PAR	GLASS TO SEPERATE SPECIFICATION
TBC	TBC	TBC	FOAM INFILL TO ABUTMENT SECTION

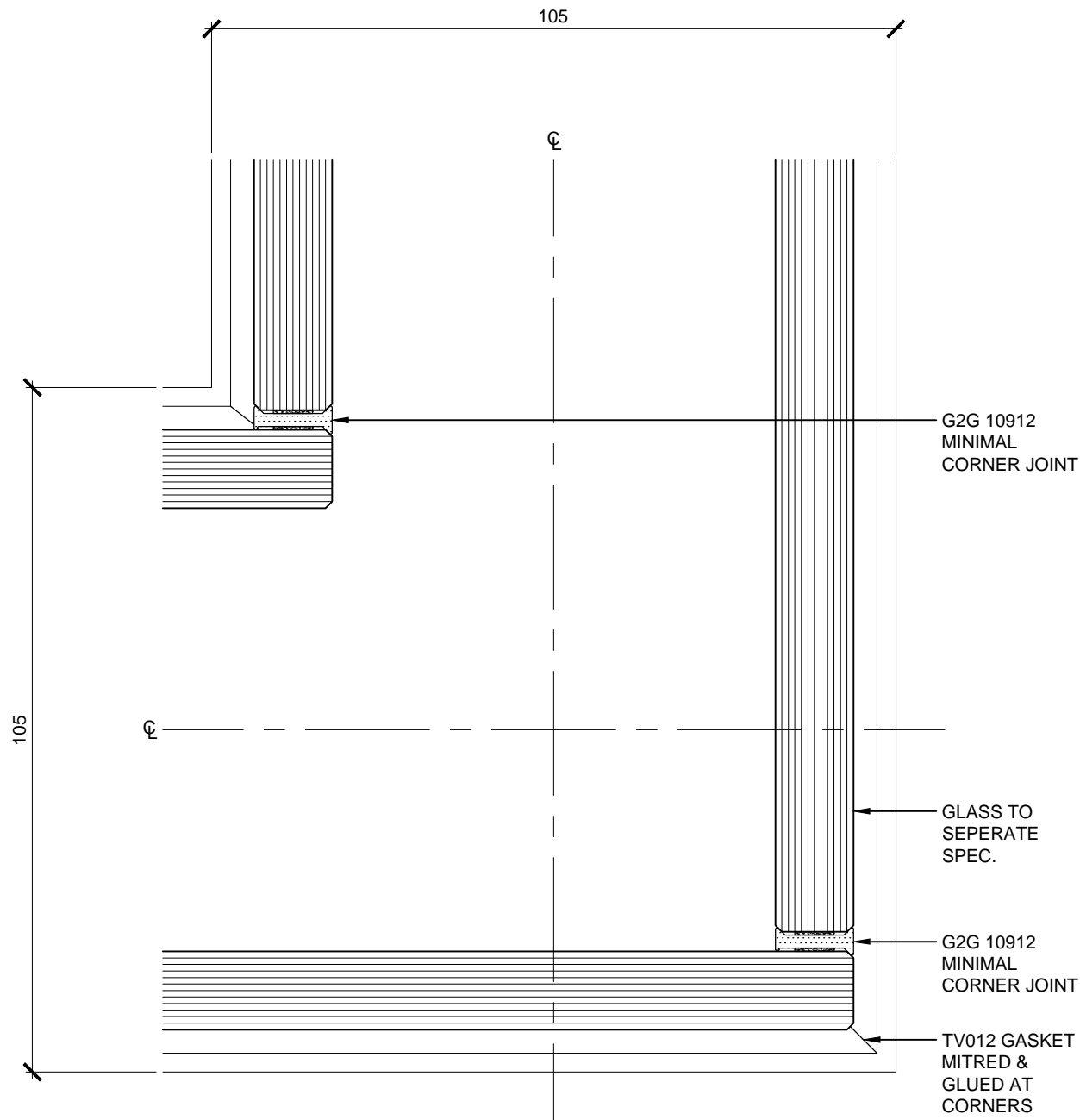
Vosseler Lite 2-106



MATERIALS SCHEDULE			
REF	SIZE	FINISH	DESCRIPTION
10712	12mm	CLEAR	REDDIPLEX G2G GLASS JOINT STRIP
	12mm OR 12.8mm x SITE DIM	PAR	GLASS TO SEPERATE SPECIFICATION

Corner
Scale 1:1

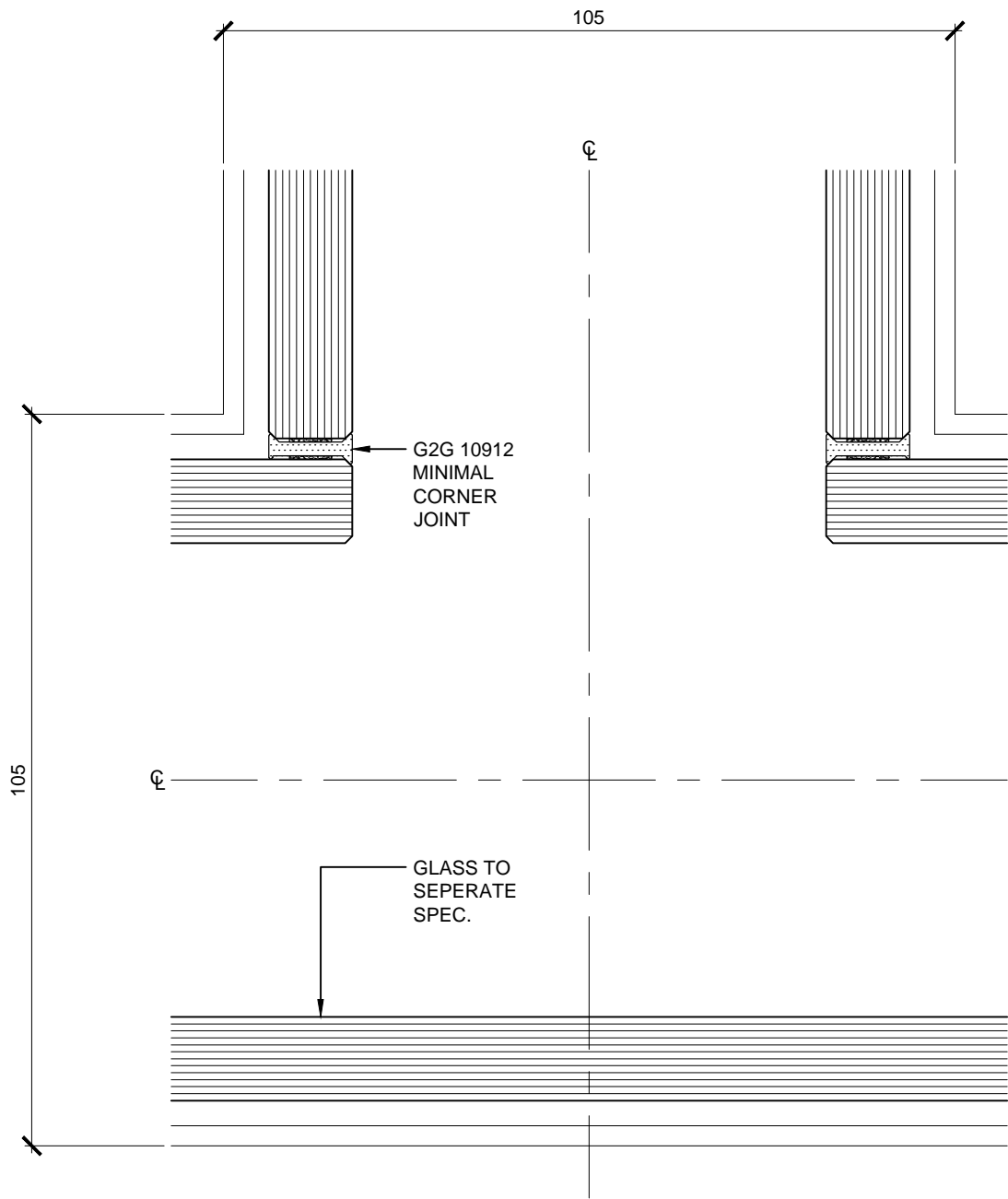
Vosseler Lite 2-106



MATERIALS SCHEDULE			
REF	SIZE	FINISH	DESCRIPTION
10912	12mm	CLEAR	REDDIPLEX G2G MINIMAL CORNER JOINT
	12mm OR 12.8mm x SITE DIM	PAR	GLASS TO SEPERATE SPECIFICATION

T-Junction
Scale 1:1

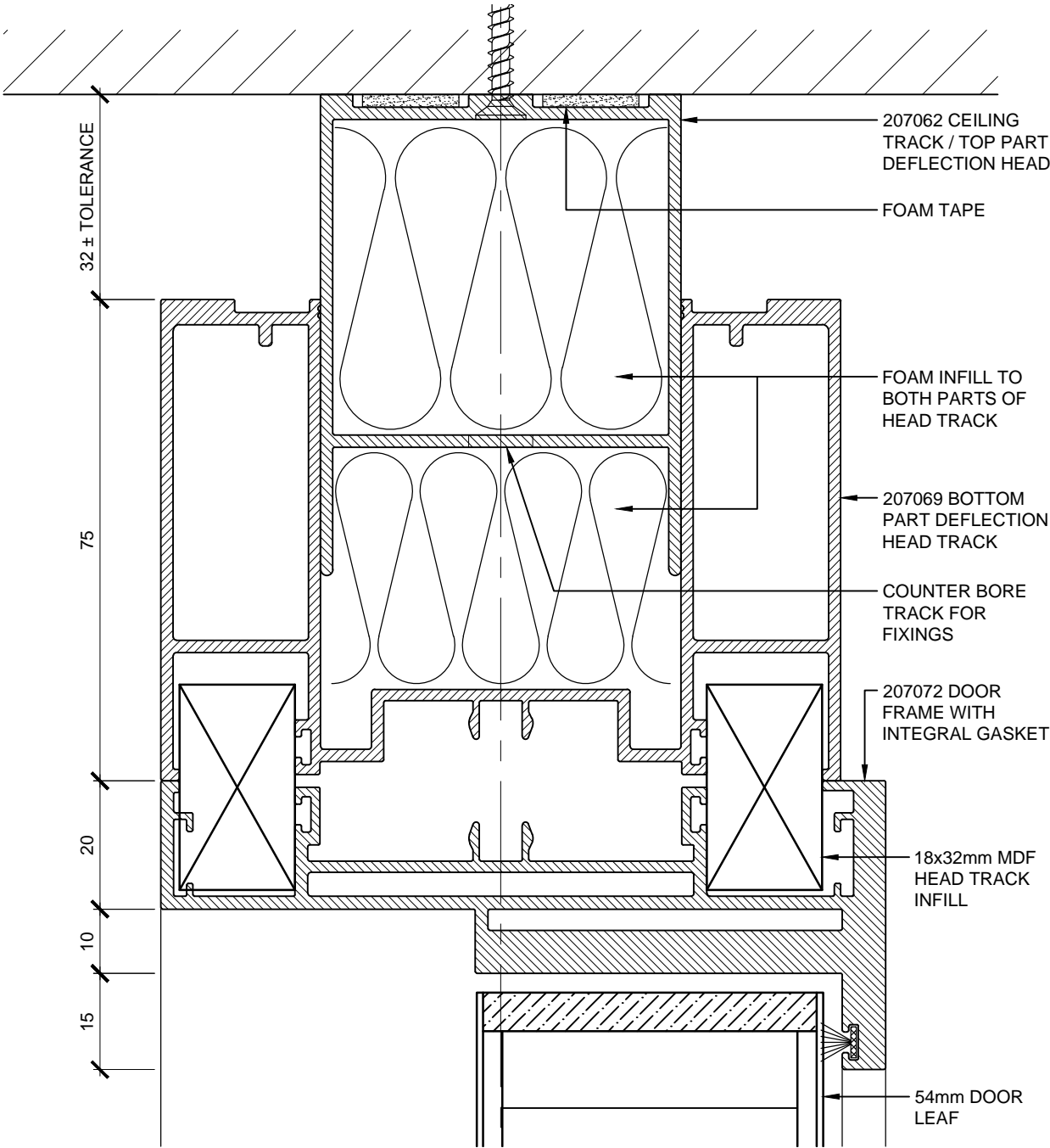
Vosseler Lite 2-106



MATERIALS SCHEDULE			
REF	SIZE	FINISH	DESCRIPTION
10912	12mm	CLEAR	REDDIPLEX G2G MINIMAL CORNER JOINT
	12mm OR 12.8mm x SITE DIM	PAR	GLASS TO SEPERATE SPECIFICATION

Door Frame
Scale 1:1

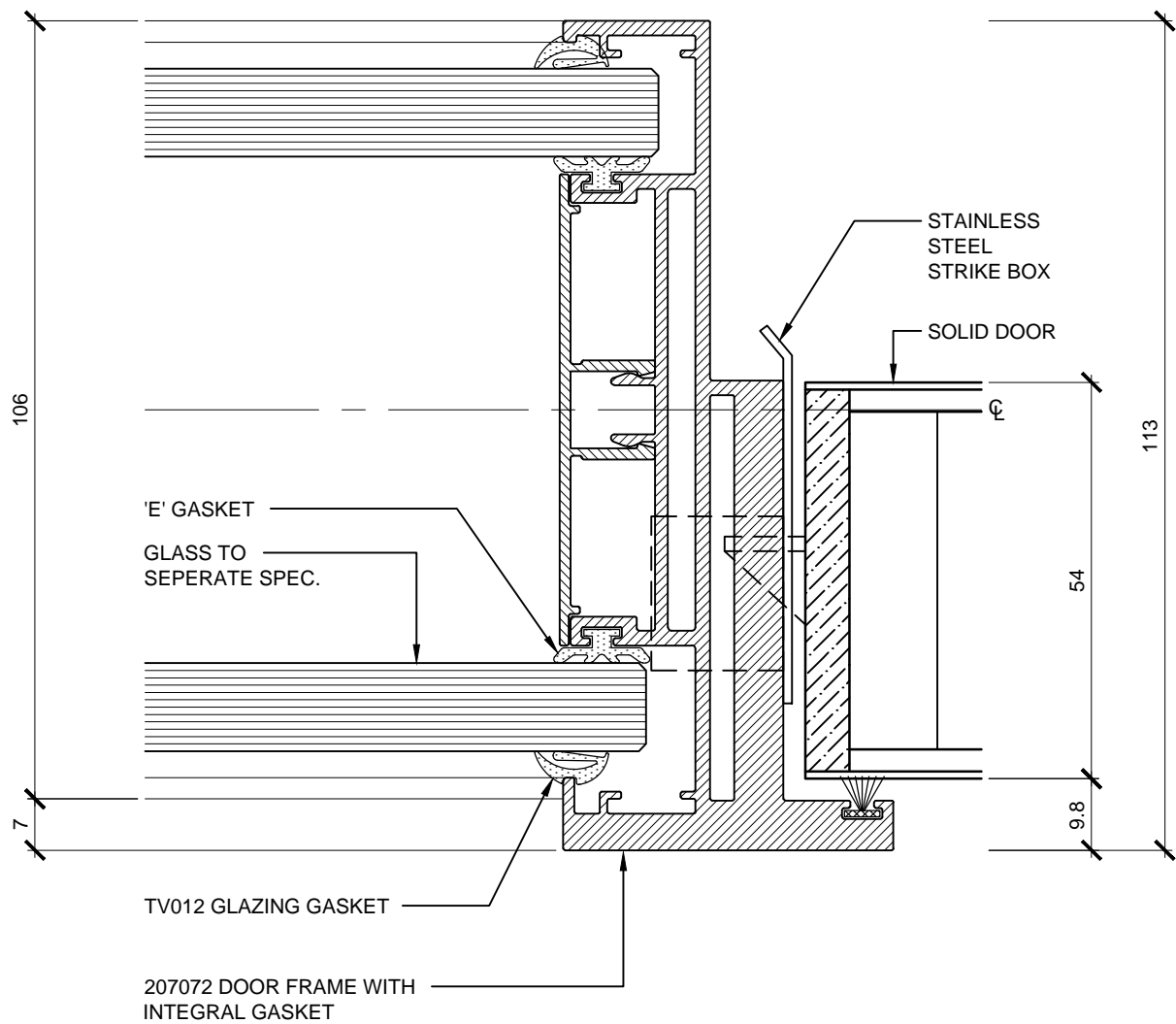
Vosseler Lite 2-106



MATERIALS SCHEDULE			
REF	SIZE	FINISH	DESCRIPTION
207062	56 x 75mm APPROX	-	CEILING TRACK / TOP PART DEFLECTION HEAD TRACK
207069	106 x 75mm APPROX	-	BOTTOM PART DEFLECTION HEAD GLAZING TRACK
	15 x 3mm	WHITE	SINGLE SIDED FOAM TAPE
TBC	TBC	TBC	FOAM INFILL TO TRACK
	32 x 18 x 1000mm		MDF PACKER / INFILL
207072	45 x 113mm APPROX	-	DOOR FRAME
	54mm	-	SOLID DOOR

Door Frame
Scale 1:1

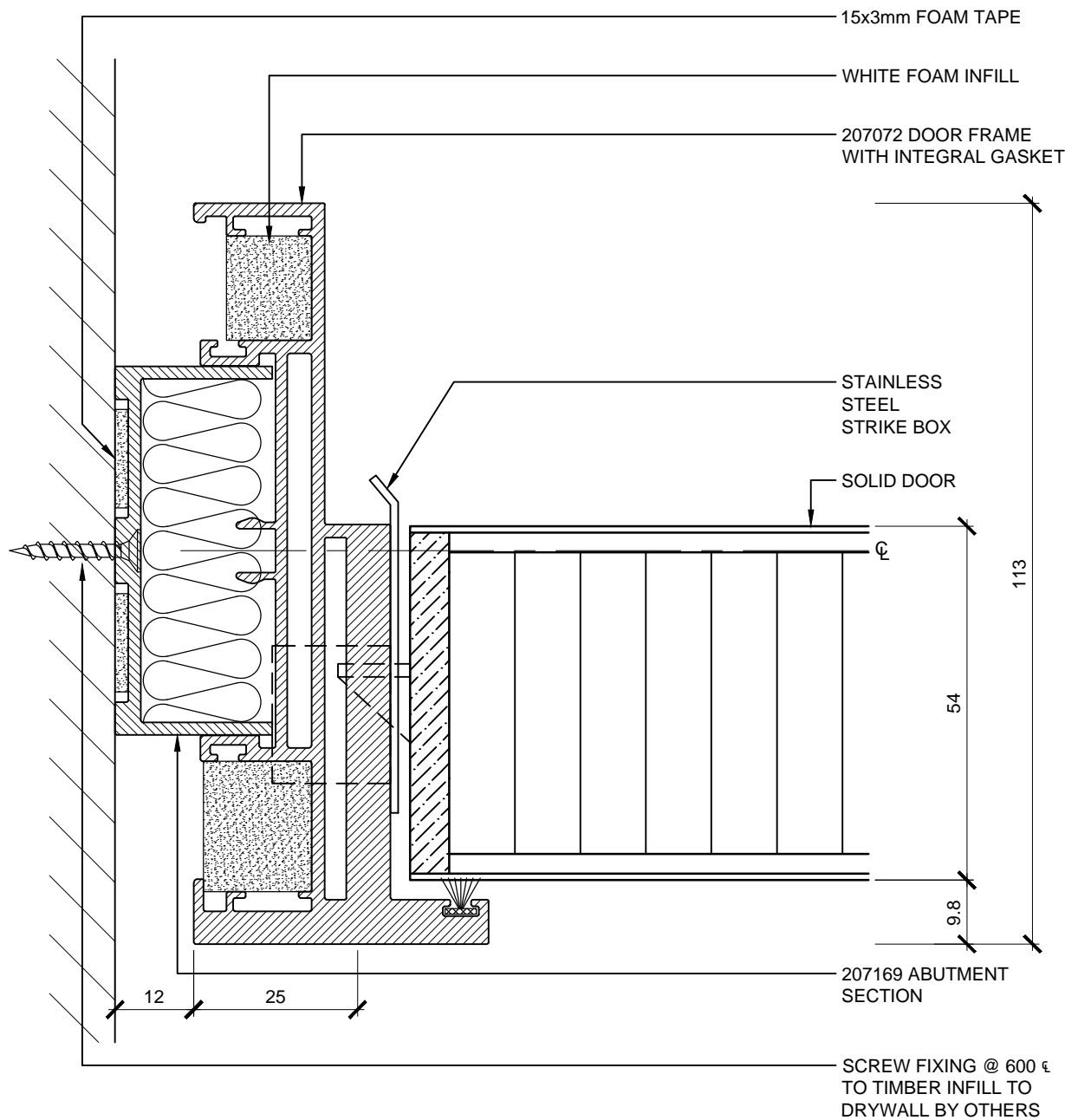
Vosseler Lite 2-106



MATERIALS SCHEDULE			
REF	SIZE	FINISH	DESCRIPTION
207072	45 x 113mm APPROX	-	DOOR FRAME
	54mm	-	SOLID DOOR
207071	64mm APPROX	-	COVER
TV012	1-2mm	CLEAR	PUSH FIT GLAZING GASKET
E035	10 x 3mm	BLACK	CAPTIVE 'E' GASKET
	12mm OR 12.8mm x SITE DIM	PAR	GLASS TO SEPERATE SPECIFICATION
	TO DETAIL	STAINLESS STEEL	STRIKE BOX

Door Frame
Scale 1:1

Vosseler Lite 2-106



MATERIALS SCHEDULE			
REF	SIZE	FINISH	DESCRIPTION
207169	56 x 25mm APPROX	-	ABUTMENT SECTION
	15 x 3mm	WHITE	SINGLE SIDED FOAM TAPE
207072	45 x 113mm APPROX	-	DOOR FRAME
	54mm	-	SOLID DOOR
	TO DETAIL	STAINLESS STEEL	STRIKE BOX
		WHITE	FOAM INFILL