



fecowand

## Flexible partition wall system as solid wall

**Dimensions:** Building-specific unit-width and unit-height, wall thickness 105 mm, optional special design variant with wall thicknesses of 125 mm and 175 mm, recommended unit size undivided up to W x H = 1.000 x 3.000 mm

**Cladding:** 2 x 19 mm three-layer particle board in accordance with DIN EN 312-1, P2/V20 gluing, formaldehyde emission class E1, building material class B2, optional other wood-based panels (MDF, OSB), particle-board B1, fire protection F90 with 2 x 18 mm gypsum particleboards A2

**Surfaces:** Melamine resin direct-coating according to DIN EN 14322 as per collection, optional CPL/HPL coating material according to DIN EN 438 (standard with F90), real wood veneers, paint finishing, fibreglass or fabric, steel cases powder-coated in RAL colours, aluminium cases natural E6/EV1 anodized

**Edges:** 1mm ABS edge all around, same colour as the surface, veneer surface with 1 mm-thick veneer edge, metal cases edged on four sides

**Substructure:** Galvanized rolled-steel sections, standard uprights with installation openings, full-length steel clips rails on the reverse of the cladding, optional uprights with slotted rail for integrated vertical organisation

**Insulation:** 60 mm mineral wool with high bio-solubility, building material class A1 (incombustible), density approx. 50 kg/m<sup>3</sup>, increased sound insulation requirement with 40 mm mineral fibre and weighting with 12,5 to 20 mm gypsum plasterboards

**Connecting profiles:** Galvanized U-shaped rolled-steel sections as recessed connecting joints, coated in RAL 7016 anthracite, optional in other RAL colours

**Floor connection:** Telescopic, integrated negative skirting approx. 30-100 mm (80 mm standard)

**Ceiling connection:** Telescopic, shadow joints approx. 20 mm (up to 80 mm), standard tolerances and structural movements up to +/- 15mm, optional higher tolerance possible

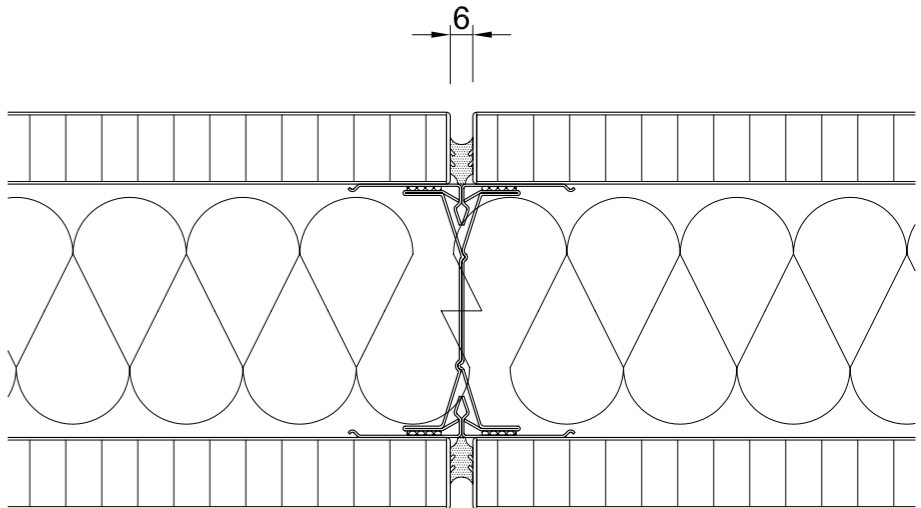
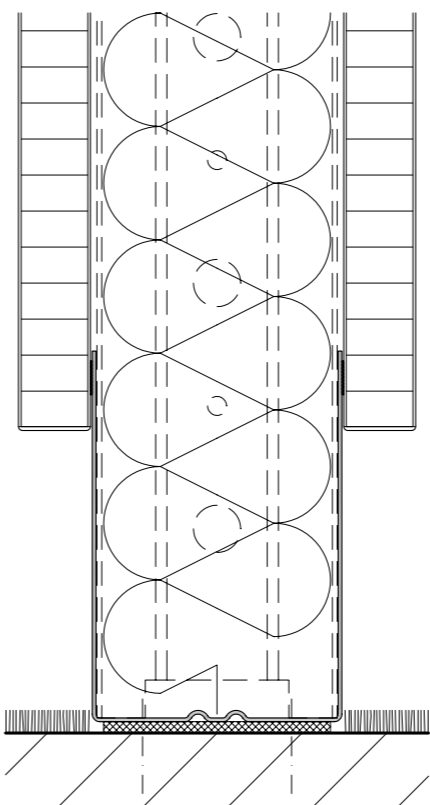
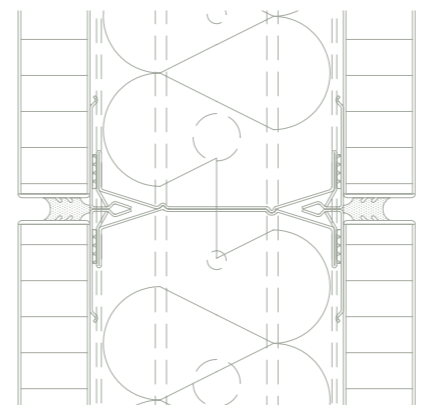
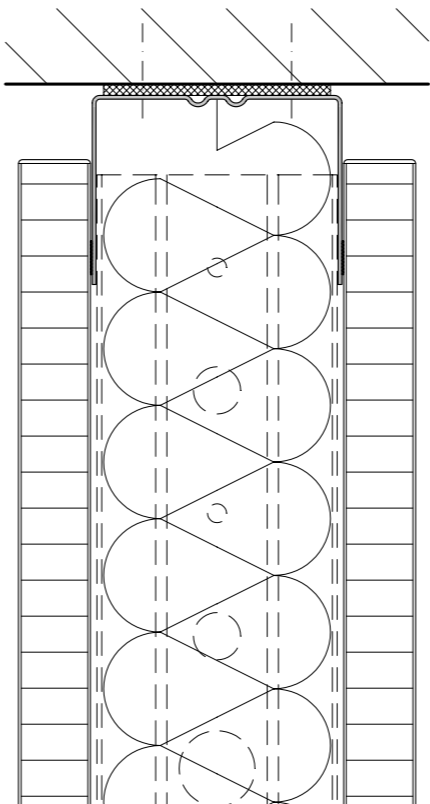
**Sound insulation:** (see also pages 44-47)

Sound insulation – solid wall	$R_{w,P} = 47 \text{ dB}$
Sound insulation – solid wall increased	$R_{w,P} = 48/51/52 \text{ dB}$
Sound insulation – solid wall 175 mm	$R_{w,P} = 57 \text{ dB}$

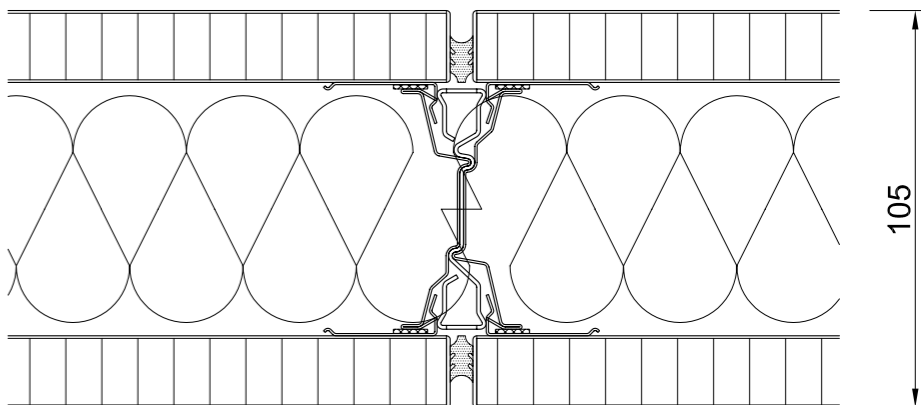
**Static certification:** according to DIN 4103, Part 1, installation area 1 and 2

**Fire resistance:** (see also pages 50-51)

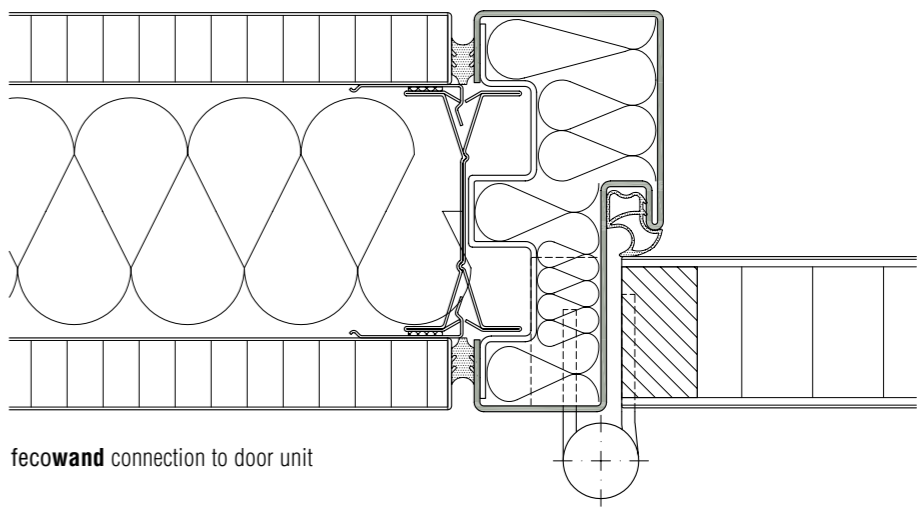
E10 (no requirements)
E130 solid wall up to W x H = 1.500 x 4.000 mm
E190 solid wall up to W x H = 1.250 x 3.000 mm



fecowand horizontal section with standard upright



fecowand horizontal section with upright for vertical organisation



fecowand connection to door unit