



fecoquic

## Wall-centred single or insulation glass with a 20 mm thin aluminium frame

**Dimensions:** Building-specific unit-width and unit-height, wall thickness 105 mm, recommended unit size undivided up to W x H = 1.350 x 3.000 mm

**Structure:** Glass frame made of aluminium profiles, mitred corners connected with 3D clamping angles, recessed glass retaining rails with mitred corners, facing width glass frame 20 mm, retaining rail 15 mm

**Surface:** Glass frame aluminium natural E6/EV1 anodized, optionally powder-coated in RAL colours

**Glazing:** Single or insulation glass consisting of float, tempered, and laminated glass\*  
 Single glass 6-12 mm float/tempered/laminated glass  
 Insulation glass 24-36 mm insulation glass out of float/temp./lam. glass

**Substructure:** Galvanized rolled-steel sections, standard uprights with installation openings, optional uprights with slotted rail for integrated vertical organisation

**Connecting profiles:** Galvanized U-shaped rolled-steel sections as recessed connecting joints, coated in RAL 7016 anthracite, optional in other RAL colours

**Frame top:** Flush-front aluminium profile in the surface of the glass frame or recessed L-shaped profile in the surface of the connecting profiles

**Floor connection:** Telescopic, integrated negative base height approx. 50-100 mm (80 mm standard), with full-glazing, three-part base profile and level adjuster

**Ceiling connection:** Telescopic, shadow joint approx. 20-50 mm, absorption of standard tolerances and structural movements up to +/- 15 mm (without frame top +/- 5 mm), optional higher tolerance

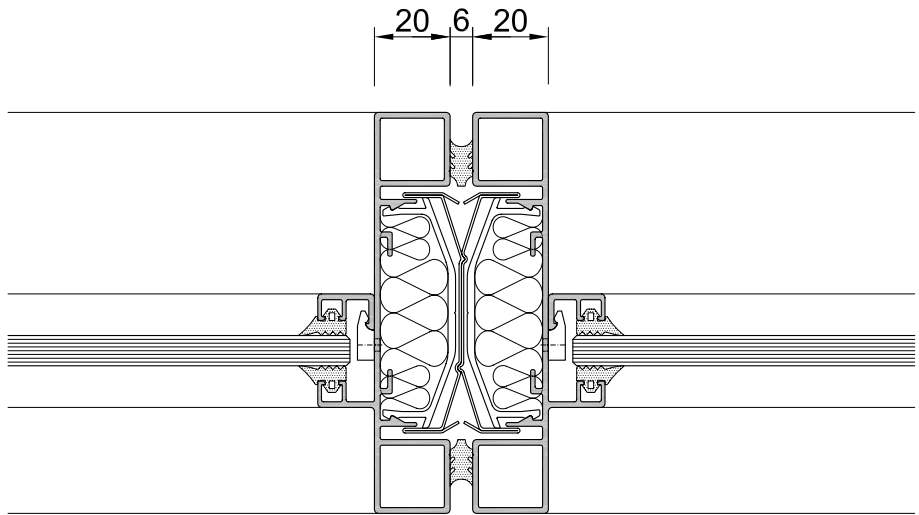
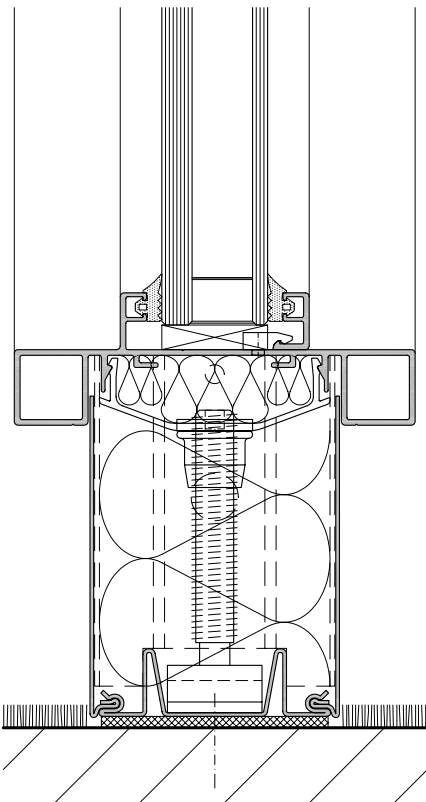
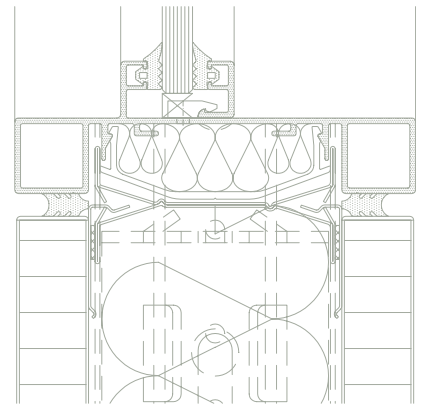
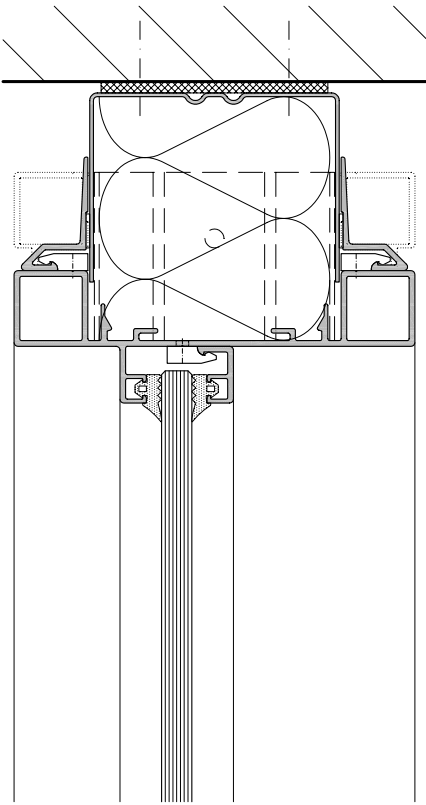
**Sound insulation:** (see also pages 44-47)  
 Sound insulation – single glazing  $R_{w,P} = 32/35/37$  dB  
 Sound insulation – insulation glazing  $R_{w,P} = 37/39/41/43$  dB

**Static certification:** According to DIN 4103, Part 1, installation area 1 and 2

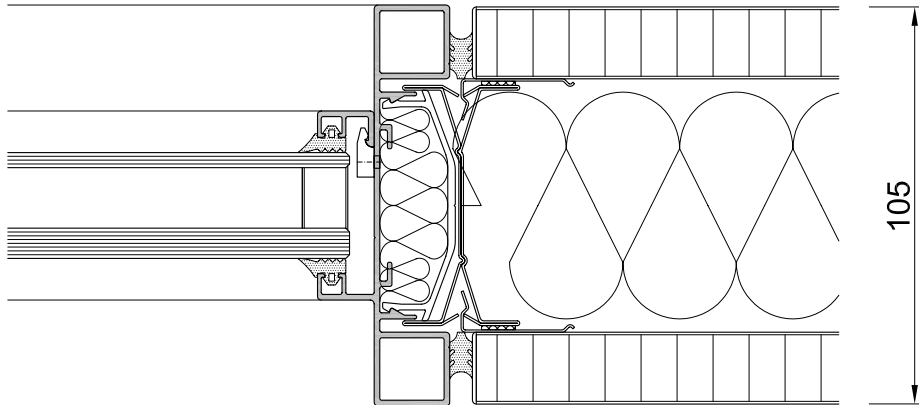
**Fire resistance:** EI0 (no requirements)

\*Glazing which extends down to the floor must, according to Workplace Regulations and Accident Prevention Regulations, be safety glass (single or laminated safety glass). With full glazing it is also recommended that glass marking be included at eye level.

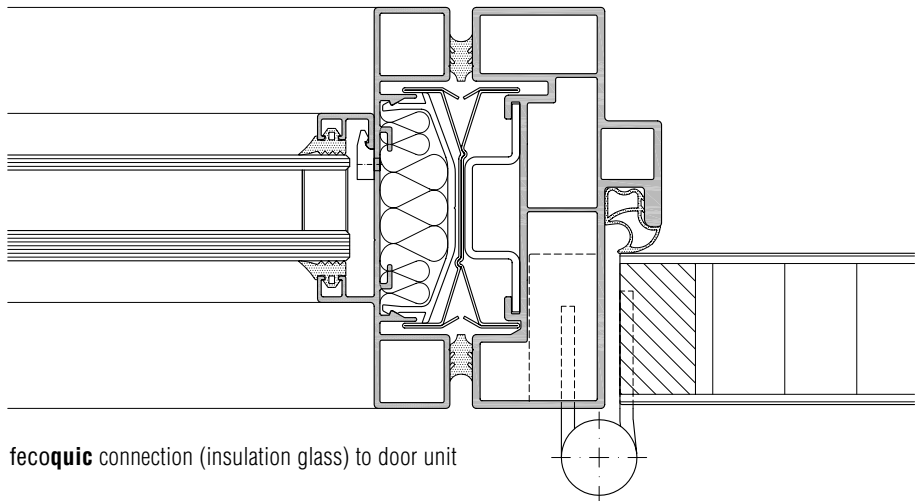
**feco**<sup>®</sup>  
DIE TRENNWAND.



fecoquic horizontal section (single glass)



fecoquic connection (insulation glass) to solid wall



fecoquic connection (insulation glass) to door unit